

nVent LENTON Lock S-Series Shear Bolt Coupler, Coated



Coated reinforcing bar is used in place of plain reinforcing bars to protect against corrosion. Typical applications include bridges, parking structures, pavement, marine structures and repair work. nVent LENTON couplers and mechanical anchors are available in multiple coatings to meet specific job requirements.

FEATURES

Requires no special bar end preparation such as sawing

Installs quickly and easily using simple, off-the-shelf hand tools

Bolt heads shear off when bolt torque is achieved, providing for simple visual inspection

Designed to work as a one-step transition/reducer

Rebar centering pin can be removed to allow the coupler to fully pass onto the reinforcing bar for applications such as closure pours

SPECIFICATIONS

Finish Standard: ASTM® B695 Class 50 with Clear Trivalent Chromate Seal

Finish: Mechanical Galvanized

Material: Steel

Table 1/2

| Catalog Number | Rebar Size, Metric | Rebar Size, US | Rebar Size, Canada | Diameter 1 (Ø1) | Diameter 2 (Ø2) | Length (L) |
|----------------|--------------------|----------------|--------------------|-----------------|-----------------|------------|
| LL12S1MG | 12 mm | #4 | 10M | 29 mm | 15 mm | 99mm |
| LL16S1MG | 14 mm, 16 mm | #5 | 15M | 35 mm | 19 mm | 109mm |
| LL20S1MG | 18 mm, 20 mm | #6 | 20M | 44 mm | 24 mm | 153mm |

| CatalogNumber | Rebar Size, Metric | Rebar Size, US | Rebar Size, Canada | Diameter 1(Ø1) | Diameter 2(Ø2) | Length (L) |
|---------------|--------------------|----------------|--------------------|----------------|----------------|------------|
| LL22S1MG | 22 mm | #7 | | 48 mm | 28 mm | 173mm |
| LL25S1MG | 25 mm | #8 | 25M | 54 mm | 30 mm | 173mm |
| LL28S1MG | 28 mm, 30 mm | #9 | 30M | 60 mm | 34 mm | 234mm |
| LL32S1MG | 32 mm | #10 | | 65 mm | 38 mm | 220mm |
| LL36S1MG | 34 mm, 36 mm | #11 | 35M | 72 mm | 43 mm | 286mm |

Table 2/2

| Catalog Number | Socket Width (SW) | Number of Bolts | Torque (TQ) | Unit Weight |
|----------------|-------------------|-----------------|-------------|-------------|
| LL12S1MG | 13mm | 4 | 110 N·m | 0.44 kg |
| LL16S1MG | 13mm | 4 | 110 N·m | 0.63 kg |
| LL20S1MG | 13mm | 6 | 205 N·m | 1.31 kg |
| LL22S1MG | 16mm | 6 | 250 N·m | 1.77 kg |
| LL25S1MG | 16mm | 6 | 340 N·m | 2.32 kg |
| LL28S1MG | 16mm | 8 | 340 N·m | 3.71 kg |
| LL32S1MG | 21mm | 6 | 750 N·m | 4.07 kg |
| LL36S1MG | 21mm | 8 | 610 N·m | 6.24 kg |

Designed to Meet: AASHTO;ABNT NBR 8548:1984;ACI 318 Type 1 (125% Specified Yield);CAN/CSA - N287.2/.3/.4;IBC Type 1 (125% Specified Yield);US Army Corps of Engineers;ACI 318 Type 2-ASTM A706 Grade 60

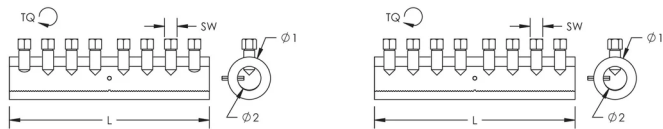
ADDITIONAL PRODUCT DETAILS

Bolt length may vary after the bolt heads are sheared off. Bolt heads are not required to be removed as long as the appropriate bolt torque is achieved.

When using an impact wrench, size the wrench for 2x the bolt torque. If using an air impact wrench, check the air pressure, torque rating and air flow requirements before starting installations.

Refer to complete installation instructions provided with the product or available at nVent.com/LENTON prior to commencing installation.

DIAGRAMS



WARNING

nVent products shall be installed and used only as indicated in nVent's product instruction sheets and training materials. Instruction sheets are available at www.nvent.com and from your nVent customer service representative. Improper installation, misuse, misapplication or other failure to completely follow nVent's instructions and warnings may cause product malfunction, property damage, serious bodily injury and death and/or void your warranty.

North America

+1.800.753.9221
Option 1 – Customer Care
Option 2 – Technical
Support

Europe

Netherlands:
+31 800-0200135
France:
+33 800 901 793

Europe

Germany:
800 1890272
Other Countries:
+31 13 5835404

APAC

Shanghai:
+ 86 21 2412 1618/19
Sydney:
+61 2 9751 8500



Our powerful portfolio of brands:

CADDY ERICO HOFFMAN ILSCO SCHROFF TRACHTE