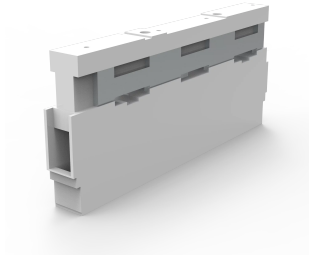


# Connection Busbar Support, WO60

Busbar support with integrated terminals.



## FEATURES

Description: Connection busbar support with integrated terminals (1,5 - 16 mm<sup>2</sup>) for feeding or tapping the busbar with internal screw holes. May also be used as centre support.

Rated voltage: 690 V

Rated current: 63 A

Rated frequency: 50/60 Hz

Rated isolation voltage  $U_i$ : 1000 V

Rated surge voltage  $U_{imp}$ : 6 kV

Short circuit withstand: 14 kA (max 400 mm distance between supports)

Power dissipation 80% of rated current: 0.5 W

Dimensions: 20 × 202 × 87 mm

Pack quantity: 10 pcs.

SPECIFICATIONS

Table 1/1						
Catalog Number	Height	Width	Depth	Material	Finish	Color
01484	20mm	202mm	87mm	Plastic	Textured	Gray

WARNING

nVent products shall be installed and used only as indicated in nVent's product instruction sheets and training materials. Instruction sheets are available at [www.nvent.com](http://www.nvent.com) and from your nVent customer service representative. Improper installation, misuse, misapplication or other failure to completely follow nVent's instructions and warnings may cause product malfunction, property damage, serious bodily injury and death and/or void your warranty.



Our powerful portfolio of brands:

CADDY   ERICO   HOFFMAN   ILSCO   SCHROFF   TRACHTE