

DPCB Punched Plain Copper Busbar, Single



CERTIFICATIONS



FEATURES

Heavy-duty power connection

Circuit breaker, generator and prefabricated power network conductor

Alternative to large and multiple cables

Earth/ground connection

Power distribution

Rounded edges

SPECIFICATIONS

Table 1/2

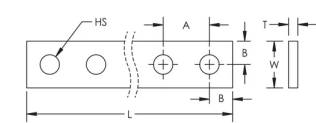
Catalog Number	Article Number	Material	Width (W)	Thickness (T)	Length (L)	Hole Size (HS)
DPCB25X5	550400	Copper	25 mm	5 mm	1750mm	10.5 mm

Table 2/2

Catalog Number	Article Number	A	B	Unit Weight
----------------	----------------	---	---	-------------

DPCB25X5	550400	25 mm	12.5 mm	1.4 kg
----------	--------	-------	---------	--------

DIAGRAMS



WARNING

nVent products shall be installed and used only as indicated in nVent's product instruction sheets and training materials. Instruction sheets are available at www.nvent.com and from your nVent customer service representative. Improper installation, misuse, misapplication or other failure to completely follow nVent's instructions and warnings may cause product malfunction, property damage, serious bodily injury and death and/or void your warranty.

North America

+1.800.753.9221
Option 1 – Customer Care
Option 2 – Technical
Support

Europe

Netherlands:
+31 800-0200135
France:
+33 800 901 793

Europe

Germany:
800 1890272
Other Countries:
+31 13 5835404

APAC

Shanghai:
+ 86 21 2412 1618/19
Sydney:
+61 2 9751 8500



Our powerful portfolio of brands:

CADDY ERICO HOFFMAN ILSCO SCHROFF TRACHTE