

nVent ERICO Ericontact Single Rail Contact



The nVent ERICO Ericontact series of rail contacts provides a superior quality connection to the rail web with a very low contact resistance. The contacts are quickly and easily fitted by means of an insertion tool, regardless of weather conditions. All nVent ERICO Ericontact components are manufactured according to high standards and norms. Tested to the most demanding requirements of the Rail Industry Standards, nVent ERICO Ericontact is the ideal solution for mechanically applied connections such as signal engineering, earthing (grounding), or traction return current.

FEATURES

Easy to install

Very low contact resistance ($< 5 \mu\Omega$)

Meets AREMA® Recommendations

SPECIFICATIONS

Table 1/2

Catalog Number	Article Number	Rail Web Thickness	Rail Type	Drill Hole Diameter	Screw Diameter (Sc)	Screw Length (L)
SK13518	715089	14.0 - 18.5 mm	136 lb RE, 141 lb AB	13.5mm	10	55mm
SK1912	715045	12.0 - 13.9 mm	AS41, BHP42, BS90A, RI59, RI60, S41	19mm	12	55mm
SK1914	715050	14.0 - 16.9 mm	100 lb ARAB, 115 lb AREA, 127 lb NYC, 132 lb RE, 85 lb ASCE, AS50, AS60	19mm	12	55mm
SK1914L		14.0 - 16.9 mm	100 lb ARAB, 115 lb AREA, 127 lb NYC, 132 lb RE, 85 lb ASCE, AS50, AS60	19mm	12	70mm

CatalogNumber	Article Number	Rail Web Thickness	Rail Type	Drill Hole Diameter	ScrewDiameter (Sc)	Screw Length (L)
SK1914SS	715051	14.0 - 16.9 mm	100 lb ARAB, 115 lb AREA, 127 lb NYC, 132 lb RE, 85 lb ASCE, AS41, AS50	19mm	12	55mm

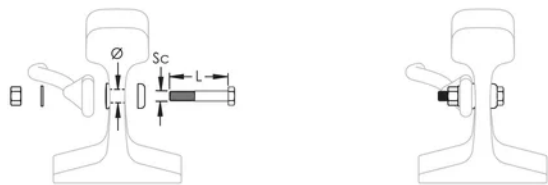
Table 2/2				
Catalog Number	Article Number	Washer Inner Diameter	Washer Outer Diameter	Nut Material
SK13518	715089	10.5mm	20mm	Electroplated Steel
SK1912	715045	13mm	24mm	Stainless Steel 304
SK1914	715050	13mm	24mm	Electroplated Steel
SK1914L		13mm	24mm	Electroplated Steel
SK1914SS	715051	13mm	24mm	Stainless Steel 304

ADDITIONAL PRODUCT DETAILS

Kit includes: (1) hex-head stainless steel 304 bolt, (1) nVent ERICO Ericontact stainless steel 304 SK-washer, (1) electrolytically tin-plated copper bush, (1) stainless steel 304 flat washer, and (1) hexagonal stainless steel 304 nut or (1) electroplated steel nut (depending on contact type).

The washer and nut for SK135165 are integrated into one piece.

DIAGRAMS



WARNING

nVent products shall be installed and used only as indicated in nVent's product instruction sheets and training materials. Instruction sheets are available at www.nvent.com and from your nVent customer service representative. Improper installation, misuse, misapplication or other failure to completely follow nVent's instructions and warnings may cause product malfunction, property damage, serious bodily injury and death and/or void your warranty.

North America

+1.800.753.9221
Option 1 – Customer Care
Option 2 – Technical
Support

Europe

Netherlands:
+31 800-0200135
France:
+33 800 901 793

Europe

Germany:
800 1890272
Other Countries:
+31 13 5835404

APAC

Shanghai:
+ 86 21 2412 1618/19
Sydney:
+61 2 9751 8500



Our powerful portfolio of brands:

CADDY ERICO HOFFMAN ILSCO SCHROFF TRACHTE