

# 2 Hole Offset Lug



## FEATURES

Provides an efficient bolting surface for grounding and power applications

Electrolytic grade copper

For use with nVent ERICO Cadweld type LA connections only

## SPECIFICATIONS

**Material:** Copper

**Type:** NEMA®

**Finish:** Tinned

Table 1/2

Catalog Number	Height (H)	Length (L)	Width (W)	Thickness (T)	A	B
B102CEOL	15.88 mm	114.3mm	25.4 mm	3.18 mm	15.9 mm	44.45 mm
B102EEOL	19.05 mm	120.65mm	25.4 mm	6.35 mm	15.9 mm	44.45 mm

Table 2/2

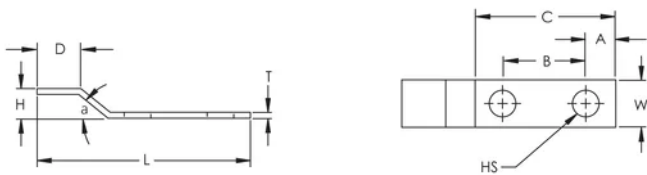
Catalog Number	C	D	Hole Size (HS)	Angle (a)	Equivalent Conductor Size
B102CEOL	76.2 mm	22.23 mm	14.29 mm	45 °	80.63mm <sup>2</sup>

Catalog Number	C	D	Hole Size (HS)	Angle (a)	Equivalent Conductor Size
B102EEOL	76.2 mm	26.92 mm	14.29 mm	45 °	161.26mm <sup>2</sup>

## ADDITIONAL PRODUCT DETAILS

For sizes not listed, contact us.

## DIAGRAMS



## WARNING

nVent products shall be installed and used only as indicated in nVent's product instruction sheets and training materials. Instruction sheets are available at [www.nvent.com](http://www.nvent.com) and from your nVent customer service representative. Improper installation, misuse, misapplication or other failure to completely follow nVent's instructions and warnings may cause product malfunction, property damage, serious bodily injury and death and/or void your warranty.

### North America

+1.800.753.9221  
Option 1 – Customer Care  
Option 2 – Technical  
Support

### Europe

Netherlands:  
+31 800-0200135  
France:  
+33 800 901 793

### Europe

Germany:  
800 1890272  
Other Countries:  
+31 13 5835404

### APAC

Shanghai:  
+ 86 21 2412 1618/19  
Sydney:  
+61 2 9751 8500



Our powerful portfolio of brands:

**CADDY ERICO HOFFMAN ILSCO SCHROFF TRACHTE**