

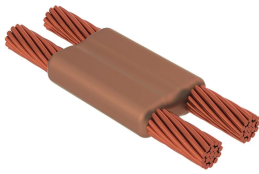
# Cable to Cable, PG, 2/0 Concentric, 10.6 mm Conductor 1 OD, C Lightning Conductor, 10.6 mm Conductor 2 OD

## Data Solutions

### CATALOG NUMBER

---

**PGC2G8C**



nVent ERICO Cadweld graphite molds are designed and engineered for thousands of connection styles and conductor combinations.

### CERTIFICATIONS

---



### FEATURES

---

Forms a permanent, low resistance connection

Provides a molecular bond

nVent ERICO Cadweld Exothermic Connections are rated with the same current capacity as the conductor

Portable installation equipment with no external source of power required

Installers can be easily trained to make nVent ERICO Cadweld Exothermic Connections

Connections can be visually inspected

## PRODUCT ATTRIBUTES

---

Mold Family: PG Mold Family

Conductor 1: 2/0 Concentric

Conductor 1 Outer Diameter, Nominal: 10.62mm

Conductor 2: C Lightning Conductor

Conductor 2 Outer Diameter, Nominal: 10.62mm

Mold Split: Horizontal

Split Crucible: No

Wear Plates: No

Mold Only: No

Welding Material: 115 or 115PLUSF20, Sold Separately

Handle Clamp: L160, Sold Separately

Mold Sealer: T403, Sold Separately

Price Key: C

Ease of Use: Easy

## ADDITIONAL PRODUCT DETAILS

---

For applications such as computer room, tunnel or other low-ventilation areas, specify a smokeless nVent ERICO Cadweld Exolon mold. Add an XL prefix to the standard mold part number when ordering (for example, a TAC2Q2Q becomes XLTAC2Q2Q). Similarly, nVent ERICO Cadweld Exolon welding material is also designated by the XL prefix (for example, 150 becomes XL150).

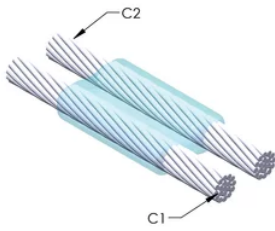
A gap between conductors may be required. See mold tag for more information.

XX-X-XX-XX-L-M-W		
XX	Mold Family	
X	Price Key	
XX	Conductor Code 1	
XX	Conductor Code 2	
L*	Split Crucible	Crucible section is split on molds designed with horizontal opening for easier cleaning
M*	Mold Only	
W*	Wear Plates	Reduce mechanical abrasion of molds at cable entry points

\* Empty if none

## DIAGRAMS

---



## WARNING

---

nVent products shall be installed and used only as indicated in nVent's product instruction sheets and training materials. Instruction sheets are available at [www.nvent.com](http://www.nvent.com) and from your nVent customer service representative. Improper installation, misuse, misapplication or other failure to completely follow nVent's instructions and warnings may cause product malfunction, property damage, serious bodily injury and death and/or void your warranty.



Our powerful portfolio of brands:

**CADDY ERICO HOFFMAN ILSCO SCHROFF TRACHTE**