

FleXbus IP55 Conductor Entry, Single Entry, 126 mm x 102 mm x 175 mm

Data Solutions

CATALOG NUMBER

FLEXCEIP55C501



nVent ERIFLEX FleXbus IP55 Conductor Entries can be used for switchboard and/or power supply cover to upgrade an installation to IP55 level. Protect the nVent ERIFLEX FleXbus Conductor insulation against sharp edges from power supply or switchboard top cover.

CERTIFICATIONS



FEATURES

Made with soft PVC to follow any potential conductor bending radius

Sealing around the conductor is made by a self-fusing tape with a strong adhesive

Good resistance to solvent and hydrocarbon splashes

Adaptable to any nVent ERIFLEX FleXbus conductor cross section by cutting the top material with traditional cutter

High acid resistance

UV resistance

RoHS compliant

Flame retardant

PRODUCT ATTRIBUTES

Article Number: 508140

Material: Polyvinylchloride

Enclosure Rating: IP 55

Type: Single Entry

Working Temperature: -40 to 140°C

A: 126mm

B: 102mm

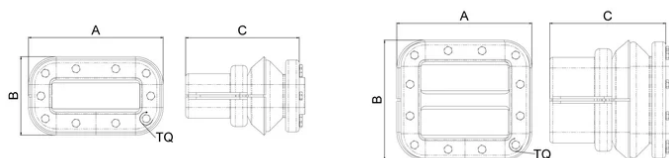
C: 175mm

Conductor Size: 220 mm²; 360 mm²; 545 mm²; 640 mm²

Torque (TQ): 2.5N·m

Unit Weight: 0.6kg

DIAGRAMS



WARNING

nVent products shall be installed and used only as indicated in nVent's product instruction sheets and training materials. Instruction sheets are available at www.nvent.com and from your nVent customer service representative. Improper installation, misuse, misapplication or other failure to completely follow nVent's instructions and warnings may cause product malfunction, property damage, serious bodily injury and death and/or void your warranty.



Our powerful portfolio of brands:

CADDY

ERICO

HOFFMAN

ILSCO

SCHROFF

TRACHTE