

# nVent CADDY Microfix Double Pipe Clamp



## FEATURES

Fast installation of parallel pipes from a single anchor

Category II noise reduction according to DIN EN ISO 3822-1

Compliant for sound insulation design according to DIN 4109

Reaction-to-fire classification is "E" in compliance with DIN EN 13501-1

## SPECIFICATIONS

<b>Screw Diameter (Sc):</b>	6
<b>Width (W):</b>	20 mm
<b>Screw Length (L):</b>	20mm
<b>Color:</b>	Black
<b>Finish:</b>	Electrogalvanized
<b>Material:</b>	Steel;EPDM-SBR Rubber
<b>Temperature:</b>	-50 to 110 °C

Table 1/2

Catalog Number	Article Number	NB/DN	Outer Diameter (OD)	Thickness (T)	A	B
MDC019	596000	10	15 - 19 mm	1.5 mm	72 mm	12 mm
MDC023	596010	15	21 - 23 mm	1.5 mm	76 mm	12 mm
MDC028	596020	20	26 - 28 mm	1.5 mm	82 mm	12 mm

CatalogNumber	Article Number	NB/DN	Outer Diameter (OD)	Thickness (T)	A	B
MDC035	596030	25	32 - 35 mm	1.5 mm	89 mm	12 mm

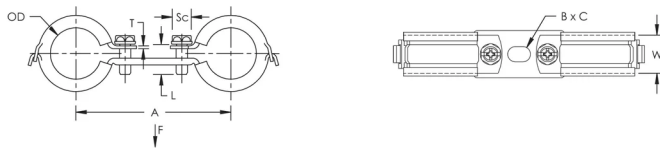
Table 2/2

Catalog Number	Article Number	C	Static Load
MDC019	596000	8.5 mm	500N
MDC023	596010	8.5 mm	500N
MDC028	596020	8.5 mm	500N
MDC035	596030	8.5 mm	500N

## ADDITIONAL PRODUCT DETAILS

Lining is EPDM rubber.

## DIAGRAMS



## WARNING

nVent products shall be installed and used only as indicated in nVent's product instruction sheets and training materials. Instruction sheets are available at [www.nvent.com](http://www.nvent.com) and from your nVent customer service representative. Improper installation, misuse, misapplication or other failure to completely follow nVent's instructions and warnings may cause product malfunction, property damage, serious bodily injury and death and/or void your warranty.

#### North America

+1.800.753.9221

Option 1 – Customer Care

Option 2 – Technical

Support

#### Europe

Netherlands:

+31 800-0200135

France:

+33 800 901 793

#### Europe

Germany:

800 1890272

Other Countries:

+31 13 5835404

#### APAC

Shanghai:

+ 86 21 2412 1618/19

Sydney:

+61 2 9751 8500



Our powerful portfolio of brands:

**CADDY**

**ERICO**

**HOFFMAN**

**ILSCO**

**SCHROFF**

**TRACHTE**

