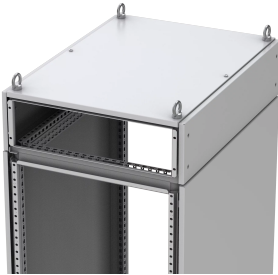


Front/Rear Top Frames For Floor Standing Enclosures, MCU



This frame creates additional space in the top and can be segregated from the enclosure. It has a universal hole pattern for mounting accessories easily.

FEATURES

Description: For cable entry and routing or for installation of a power distribution system. Fixed to the top of the enclosure by four M12 screws. Available in 200 mm and 300 mm heights. The enclosure roof plate CCR can be used to close the top. For lifting MCU together with an enclosure a separate lifting kit MCUK is needed.

Side panels: MCUP supplied as an accessory.

Material: Frame in 1.75 mm steel plate, panels in 1.35 mm steel plate.

Finish: RAL 7035 structured powder coating.

Protection: Complies with IP55.

Pack quantity: 1 piece with front and back panels including mounting accessories (without roof plate).

SPECIFICATIONS

Color: Light Gray
Finish: Powder Coated
Color Code: RAL 7035
Material: Steel

Table 1/1

| Catalog Number | Article Number | Height | Width | Depth | Enclosure Material | Quick Ship |
|----------------|----------------|--------|--------|-------|--------------------|------------|
| MCU2046R5 | | 200mm | 400mm | 600mm | Steel | No |
| MCU2068R5 | MCU2068R5 | 200mm | 600mm | 800mm | Steel | No |
| MCU2085R5 | | 200mm | 800mm | 500mm | Steel | No |
| MCU2066R5 | | 200mm | 600mm | 600mm | Steel | No |
| MCU2086R5 | | 200mm | 800mm | 600mm | Steel | No |
| MCU2065R5 | | 200mm | 600mm | 500mm | Steel | No |
| MCU2088R5 | MCU2088R5 | 200mm | 800mm | 800mm | Steel | No |
| MCU2105R5 | | 200mm | 1000mm | 500mm | Steel | No |
| MCU2048R5 | MCU2048R5 | 200mm | 400mm | 800mm | Steel | No |
| MCU2106R5 | | 200mm | 1000mm | 600mm | Steel | No |
| MCU2128R5 | MCU2128R5 | 200mm | 1200mm | 800mm | Steel | No |
| MCU2108R5 | MCU2108R5 | 200mm | 1000mm | 800mm | Steel | No |
| MCU2125R5 | | 200mm | 1200mm | 500mm | Steel | No |
| MCU2126R5 | | 200mm | 1200mm | 600mm | Steel | No |
| MCU3106R5 | | 300mm | 1000mm | 600mm | Steel | No |
| MCU3088R5 | MCU3088R5 | 300mm | 800mm | 800mm | Steel | No |

| Catalog Number | Article Number | Height | Width | Depth | EnclosureMaterial | Quick Ship |
|----------------|----------------|--------|--------|-------|-------------------|------------|
| MCU3108R5 | MCU3108R5 | 300mm | 1000mm | 800mm | Steel | No |
| MCU3086R5 | | 300mm | 800mm | 600mm | Steel | No |
| MCU3068R5 | MCU3068R5 | 300mm | 600mm | 800mm | Steel | No |
| MCU3126R5 | | 300mm | 1200mm | 600mm | Steel | No |
| MCU3048R5 | MCU3048R5 | 300mm | 400mm | 800mm | Steel | No |
| MCU3066R5 | | 300mm | 600mm | 600mm | Steel | No |
| MCU3128R5 | MCU3128R5 | 300mm | 1200mm | 800mm | Steel | No |

WARNING

nVent products shall be installed and used only as indicated in nVent's product instruction sheets and training materials. Instruction sheets are available at www.nvent.com and from your nVent customer service representative. Improper installation, misuse, misapplication or other failure to completely follow nVent's instructions and warnings may cause product malfunction, property damage, serious bodily injury and death and/or void your warranty.



Our powerful portfolio of brands:

CADDY ERICO HOFFMAN ILSCO SCHROFF TRACHTE