

# Pouring Basin Ceramic Insert and Disk



The ceramic insert and disk fit inside the pouring basin crucible and are intended to retain the filler material until the exothermic reaction is complete and melts the disk. Once the disk has melted, it allows the molten filler material to gravity feed the pouring basin.

## FEATURES

Helps prevent excessive wear of the crucible

Designed for one-time use

## SPECIFICATIONS

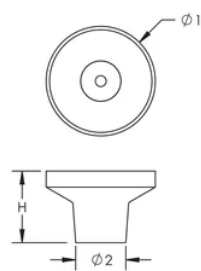
Table 1/1

Catalog Number	Material	Diameter 1 (Ø1)	Diameter 2 (Ø2)	Height (H)	Unit Weight	Package Quantity
RBS5037	Ceramic, Steel	69 mm	32 mm	45 mm	0.06 kg	60

## ADDITIONAL PRODUCT DETAILS

Prior to installation, please read and understand all of the detailed instructions and safety notices provided in the nVent LENTON Cadweld Rebar Splicing System Instruction Manual.

DIAGRAMS



WARNING

nVent products shall be installed and used only as indicated in nVent's product instruction sheets and training materials. Instruction sheets are available at [www.nvent.com](http://www.nvent.com) and from your nVent customer service representative. Improper installation, misuse, misapplication or other failure to completely follow nVent's instructions and warnings may cause product malfunction, property damage, serious bodily injury and death and/or void your warranty.

North America

+1.800.753.9221  
Option 1 – Customer Care  
Option 2 – Technical  
Support

Europe

Netherlands:  
+31 800-0200135  
France:  
+33 800 901 793

Europe

Germany:  
800 1890272  
Other Countries:  
+31 13 5835404

APAC

Shanghai:  
+ 86 21 2412 1618/19  
Sydney:  
+61 2 9751 8500



Our powerful portfolio of brands:

CADDY   ERICO   HOFFMAN   ILSCO   SCHROFF   TRACHTE