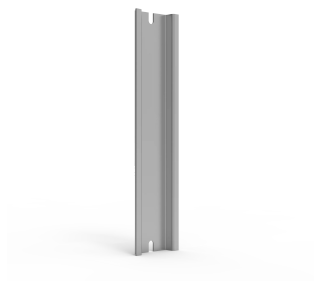


## DIN Rail, DR3



A ready to use DIN rail that facilitates both procurement and installation.

### FEATURES

---

Description: DIN rail 35 mm for OABP/OPCP boxes.

Material: Galvanized steel.

Pack quantity: 1 piece.

Ready to use rails ensure that both procurement and installation can be done efficiently reducing the labour time required

Note: DR3 can be mounted in both directions.

SPECIFICATIONS

**Finish:** Galvanized  
**Material:** Galvanized Steel

Table 1/1				
Catalog Number	Height	Width	Enclosure Material	Quick Ship
DR351505E	200mm	200mm	ABS, Polycarbonate	No
DR352505E	300mm	300mm	ABS, Polycarbonate	No
DR353505E	400mm	400mm	ABS, Polycarbonate	No

WARNING

nVent products shall be installed and used only as indicated in nVent's product instruction sheets and training materials. Instruction sheets are available at [www.nvent.com](http://www.nvent.com) and from your nVent customer service representative. Improper installation, misuse, misapplication or other failure to completely follow nVent's instructions and warnings may cause product malfunction, property damage, serious bodily injury and death and/or void your warranty.



Our powerful portfolio of brands:

CADDY   ERICO   HOFFMAN   ILSCO   SCHROFF   TRACHTE