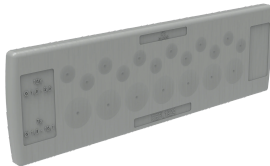


Cable Entry Gland Plate Rectangular, CEPL



CEPL cable entries are ideally suited for applications in which an enclosure requires many incoming or outgoing cables, but there is limited installation space. CEPL entries can be installed quickly and easily without using tools.

INDUSTRY STANDARDS

UL 508A Component Recognized; Type 1, 12; File No. E61997

UL94 V-0 Flammability

NEMA Type 1, 12

CE

IP54

FEATURES

Finish: Gray

Pack quantity: 10

Description: Fast, cost-effective and tool-free cable entry for incoming cables and/or pneumatic conduits inside an enclosure. The snap-in system works for wall thicknesses of 1.5 to 2.5 mm.

Temperature resistance: -40°C to +90°C

Flammability: UL94 V-0

Protection: IP54, NEMA 1, 12

Material: TPE

SPECIFICATIONS

| Table 1/1 | | | | | | |
|----------------|----------------------|---|---------------------------|-------------|--------|-------|
| Catalog Number | Cable Entry Quantity | Cable Entry | Configuration | Cutout Size | Height | Width |
| CEPL1224 | 12 | (12) 1.0 - 15.0 mm | | 36 x 112mm | 44mm | 142mm |
| CEPL1824 | 18 | (4) 1.0 - 6.5 mm, (5) 1.0 - 10.5 mm, (5) 1.0 - 12.5 mm, (4) 1.0 - 16.1 mm | | 36 x 112mm | 44mm | 142mm |
| CEPL2624 | 26 | (16) 1.0 - 6.5 mm, (4) 1.0 - 12.1 mm, (4) 1.0 - 16.1 mm, (2) ASI-LTG | | 36 x 112mm | 44mm | 142mm |
| CEPL1724 | 17 | (5) 1.0 - 10.5 mm, (12) 1.0 - 12.6 mm | | 36 x 112mm | 44mm | 142mm |
| CEPL4824 | 48 | (48) 1.0 - 6.5 mm | | 36 x 112mm | 44mm | 142mm |
| CEPL1424 | 14 | (14) 1.0 - 12.1 mm | 12 x 1.0-15.0mm (.04-.59) | 36 x 112mm | 44mm | 142mm |
| CEPL5024 | 50 | (50) 1.0 - 6.55 mm | | 36 x 112mm | 44mm | 142mm |
| CEPL4224 | 42 | (12) 1.0 - 7.2 mm, (17) 1.0 - 6.4 mm, (12) 1.0 - 5.0 mm, (1) 1.0 - 4.7 mm | | 36 x 112mm | 44mm | 142mm |
| CEPL1924 | 19 | (12) x 1.0 - 6.5 mm, (7) 1.0 - 12.1 mm | | 36 x 112mm | 44mm | 142mm |

WARNING

nVent products shall be installed and used only as indicated in nVent's product instruction sheets and training materials. Instruction sheets are available at www.nvent.com and from your nVent customer service representative. Improper installation, misuse, misapplication or other failure to completely follow nVent's instructions and warnings may cause product malfunction, property damage, serious bodily injury and death and/or void your warranty.



Our powerful portfolio of brands:

CADDY ERICO HOFFMAN ILSCO SCHROFF TRACHTE