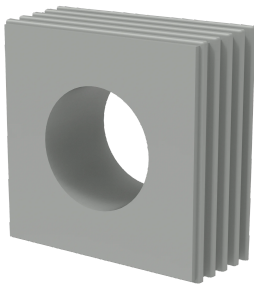


Cable Entry Gland Plate Connected Grommet Large, CCFGL



CCFG grommets are used together with the CCFI and CCFO cable entry systems. The tapered shape of the grommet makes it easy to press in the grommet. The wave-cut profile makes them easy to install and ensures a tight fit around the individual cables.

INDUSTRY STANDARDS

UL 508A Component Recognized; Type 1, 12, 4X (indoor only); File No. E61997

UL94 V-0 Flammability

NEMA Type 1, 12, 4X (indoor only)

CE

IP66

FEATURES

Finish: Gray

Pack quantity: 10

Description: The CCFG system is available in two sizes: small and large. The conical shape of the grommets allows them to be easily pressed in and provides static strain relief in accordance with DIN EN 62444. For assembly, they are pressed from the inside out into the openings of the assembled inlays. The grommets are available in two different sizes to match the diameter of the cable. The CCFG is first placed around the cable and then inserted into the cable gland. Thanks to the wave-cut profile, there is no need to remove the connector on the assembled cabled.

Temperature resistance: -40°C to +90°C

Flammability: UL94 V-0

Protection: IP66, NEMA 1, 4x, 12 (Indoor use only)

Material: TPE

Large Grommets available with different hole sizes to match cable diameter

Grommet is placed around cable and then inserted into cable gland

SPECIFICATIONS

Table 1/1						
Catalog Number	Height	Width	Depth	Material	Finish	Color
CCFGL14	42.8mm	42.8mm	17.7mm	Plastic	Untreated	Gray
CCFGL34	42.8mm	42.8mm	17.7mm	Plastic	Untreated	Gray
CCFGL33	42.8mm	42.8mm	17.7mm	Plastic	Untreated	Gray
CCFGL32	42.8mm	42.8mm	17.7mm	Plastic	Untreated	Gray
CCFGL31	42.8mm	42.8mm	17.7mm	Plastic	Untreated	Gray
CCFGL30	42.8mm	42.8mm	17.7mm	Plastic	Untreated	Gray
CCFGL29	42.8mm	42.8mm	17.7mm	Plastic	Untreated	Gray
CCFGL28	42.8mm	42.8mm	17.7mm	Plastic	Untreated	Gray
CCFGL27	42.8mm	42.8mm	17.7mm	Plastic	Untreated	Gray
CCFGL26	42.8mm	42.8mm	17.7mm	Plastic	Untreated	Gray
CCFGL24	42.8mm	42.8mm	17.7mm	Plastic	Untreated	Gray
CCFGL25	42.8mm	42.8mm	17.7mm	Plastic	Untreated	Gray
CCFGL23	42.8mm	42.8mm	17.7mm	Plastic	Untreated	Gray
CCFGL22	42.8mm	42.8mm	17.7mm	Plastic	Untreated	Gray
CCFGL21	42.8mm	42.8mm	17.7mm	Plastic	Untreated	Gray
CCFGL18	42.8mm	42.8mm	17.7mm	Plastic	Untreated	Gray
CCFGL20	42.8mm	42.8mm	17.7mm	Plastic	Untreated	Gray
CCFGL19	42.8mm	42.8mm	17.7mm	Plastic	Untreated	Gray
CCFGL17	42.8mm	42.8mm	17.7mm	Plastic	Untreated	Gray

Catalog Number	Height	Width	Depth	Material	Finish	Color
CCFGL16	42.8mm	42.8mm	17.7mm	Plastic	Untreated	Gray
CCFGL15	42.8mm	42.8mm	17.7mm	Plastic	Untreated	Gray

WARNING

nVent products shall be installed and used only as indicated in nVent's product instruction sheets and training materials. Instruction sheets are available at www.nvent.com and from your nVent customer service representative. Improper installation, misuse, misapplication or other failure to completely follow nVent's instructions and warnings may cause product malfunction, property damage, serious bodily injury and death and/or void your warranty.



Our powerful portfolio of brands:

CADDY ERICO HOFFMAN ILSCO SCHROFF TRACHTE