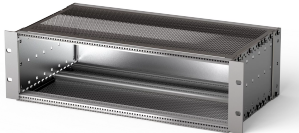


EuropacPRO 19" Subrack Kit for Backplane, Shielded, CompactPCI

EMC Shielded subrack for backplane mounting, for CPCI application.



CERTIFICATIONS



FEATURES

Subrack with side panel type F ("flexible") for CompactPCI plug-in units with high insertion and withdrawal forces

Aluminum construction

Rear horizontal rail for backplane mounting with insulation strip

Internal and external dimensions in accordance with: IEC 60297-3-100, -101, -102, -103, -104, IEEE 1101.1, IEEE 1101.10/11

Modifications such as cutouts, different finishes or dimensions available

EMC of approximately 40 dB at 1 GHz, 30 dB at 2 GHz, assuming that the front is covered with shielded front panels, testing in accordance with VG 95373 part 15

Supplied as space-saving flat-pack

IP 20, in accordance with IEC 60529

Horizontal rail type "Heavy"

SPECIFICATIONS

Material:	Aluminum
Finish:	Anodized; Passivated

Product Type: Subrack/Chassis

EMC Shielding: Yes

Table 1/3

Catalog Number	Rack Height	Depth (D)	Rear I/O	Package Quantity	For Mounting	Board Depth
24563-152	3U	235mm		1	Backplane	160mm
24563-457	6U	275mm	Yes	1	Backplane	80mm, 160mm
24563-452	6U	235mm		1	Backplane	160mm
24563-157	3U	275mm	Yes	1	Backplane	80mm, 160mm

Table 2/3

Catalog Number	Gasket Type	Handle Included	Mounting	Complies With	Rack Width	Static Load
24563-152	Textile EMC	No	Rack	IEC 60297-3-103, IEEE 1101.10	84HP	11kg
24563-457	Textile EMC	No	Rack	IEC 60297-3-103, IEEE 1101.10, IEEE 1101.11	84HP	11kg
24563-452	Textile EMC	No	Rack	IEC 60297-3-103, IEEE 1101.10	84HP	11kg
24563-157	Textile EMC	No	Rack	IEC 60297-3-103, IEEE 1101.10, IEEE 1101.11	84HP	11kg

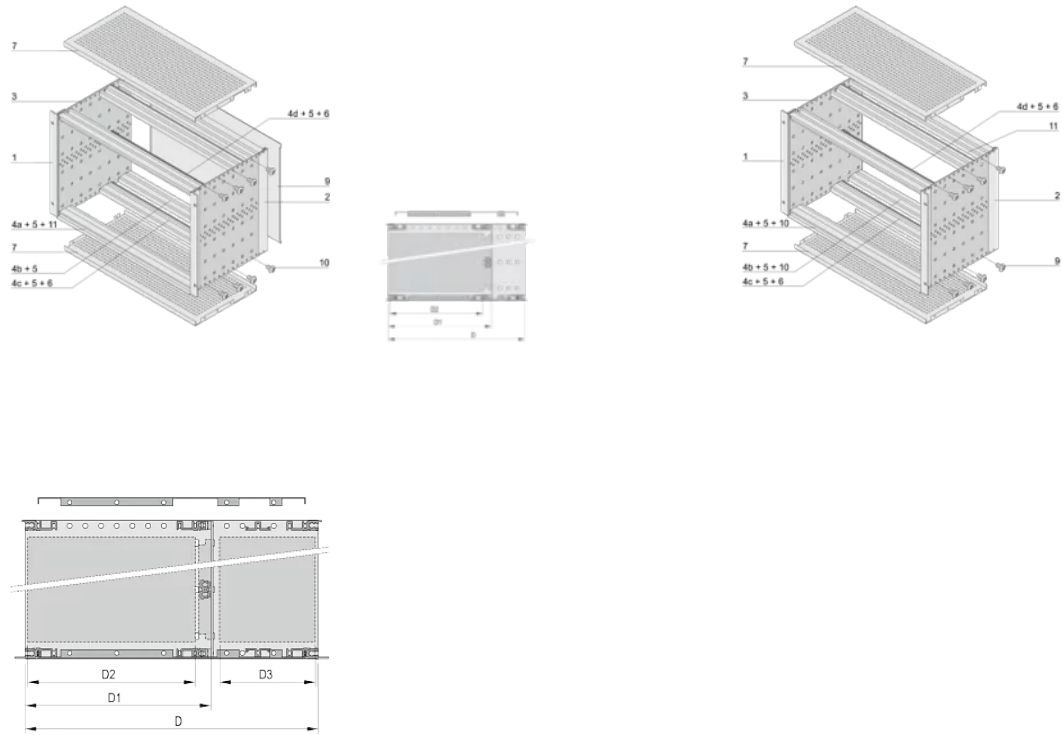
Table 3/3

Catalog Number	Quick Ship
24563-152	No
24563-457	No
24563-452	No
24563-157	No

ADDITIONAL PRODUCT DETAILS

Individual configuration: broad range of variants in height, width and depth; guide rails for a wide variety of applications; interior options; accessories and mounting material.

DIAGRAMS



WARNING

nVent products shall be installed and used only as indicated in nVent's product instruction sheets and training materials. Instruction sheets are available at www.nvent.com and from your nVent customer service representative. Improper installation, misuse, misapplication or other failure to completely follow nVent's instructions and warnings may cause

North America

All locations
+1.763.422.2661
Chat with us:
nvent.com/schroff

Europe

Straubenhardt, Germany
+49.7082.794.0
Betschdorf, France
+33.3.88.90.64.90
Warsaw, Poland
+48.22.209.98.35
Assago, Italy
+39.02.932.7141
Chat with us:
nvent.com/schroff

Asia

Shanghai, China
+86.21.2412.6943
Qingdao, China
+86.532.8771.6101
Singapore
+65.6768.5800
Shin-Yokohama, Japan
+81.45.476.0271
Chat with us:
nvent.com/schroff

Middle East & India

Dubai, United Arab Emirates
+971.4.378.1700
Bangalore, India
+91.80.6715.2001
Istanbul, Turkey
+90.216.250.7374
Chat with us:
nvent.com/schroff



Our powerful portfolio of brands:

CADDY ERICO HOFFMAN ILSCO SCHROFF TRACHTE