

CPP Tapered Plastic Screw-In Plug for A12, A22 and A32K



FEATURES

Designed for use with the A12, A22 and A32K coupler families

Designed to keep dirt, water and concrete slurry out of the coupler during the concrete pour

Color coded for the appropriate coupler size

SPECIFICATIONS

Material: High Density Polyethylene (HDPE)

Table 1/2

| Catalog Number | Article Number | Rebar Size, Metric | Rebar Size, US | Rebar Size, Canada | Diameter (Ø) | Height (H) |
|----------------|----------------|--------------------|----------------|--------------------|--------------|------------|
| EL16CPPB100 | 153090 | 16 mm | #5 | 15M | 22 mm | 13 mm |
| EL14CPPB100 | 153080 | 14 mm | | | 22 mm | 13 mm |
| EL10CPPB100 | 153060 | 10 mm | #3 | | 17 mm | 13 mm |
| EL18CPPB100 | 153100 | 18 mm | | | 27 mm | 13 mm |
| EL12CPPB100 | 153070 | 12 mm | #4 | 10M | 17 mm | 13 mm |

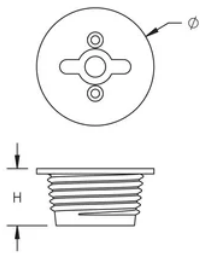
| CatalogNumber | Article Number | Rebar Size, Metric | Rebar Size, US | Rebar Size, Canada | Diameter (Ø) | Height (H) |
|---------------|----------------|--------------------|----------------|--------------------|--------------|------------|
| EL20CPPB100 | 153110 | 20 mm | #6 | 20M | 27 mm | 13 mm |
| EL25CPPB100 | 153130 | 25 mm | #8 | 25M | 33 mm | 16 mm |
| EL36CPPB50 | 153180 | 36 mm | #11 | 35M | 46 mm | 16 mm |
| EL32CPPB100 | 153160 | 32 mm | #10 | | 42 mm | 16 mm |
| EL30CPPB100 | 153150 | 30 mm | | | 37 mm | 16 mm |
| EL40CPPB50 | 153200 | 40 mm | | | 52 mm | 16 mm |
| EL28CPPB100 | 153140 | 28 mm | #9 | 30M | 37 mm | 16 mm |
| EL22CPPB100 | 153120 | 22 mm | #7 | | 33 mm | 16 mm |
| EL50CPPB40 | 153220 | 50 mm | | | 64 mm | 16 mm |

Table 2/2

| Catalog Number | Article Number | Color | Package Quantity |
|----------------|----------------|--------|------------------|
| EL16CPPB100 | 153090 | Black | 100 |
| EL14CPPB100 | 153080 | Green | 100 |
| EL10CPPB100 | 153060 | Yellow | 100 |
| EL18CPPB100 | 153100 | White | 100 |
| EL12CPPB100 | 153070 | Red | 100 |
| EL20CPPB100 | 153110 | Yellow | 100 |
| EL25CPPB100 | 153130 | Red | 100 |
| EL36CPPB50 | 153180 | Blue | 50 |

| Catalog Number | Article Number | Color | Package Quantity |
|----------------|----------------|--------|------------------|
| EL32CPPB100 | 153160 | Yellow | 100 |
| EL30CPPB100 | 153150 | White | 100 |
| EL40CPPB50 | 153200 | Green | 50 |
| EL28CPPB100 | 153140 | Black | 100 |
| EL22CPPB100 | 153120 | Blue | 100 |
| EL50CPPB40 | 153220 | Black | 40 |

DIAGRAMS



WARNING

nVent products shall be installed and used only as indicated in nVent's product instruction sheets and training materials. Instruction sheets are available at www.nvent.com and from your nVent customer service representative. Improper installation, misuse, misapplication or other failure to completely follow nVent's instructions and warnings may cause product malfunction, property damage, serious bodily injury and death and/or void your warranty.

North America

+1.800.753.9221

Option 1 – Customer Care

Option 2 – Technical

Support

Europe

Netherlands:

+31 800-0200135

France:

+33 800 901 793

Europe

Germany:

800 1890272

Other Countries:

+31 13 5835404

APAC

Shanghai:

+ 86 21 2412 1618/19

Sydney:

+61 2 9751 8500



Our powerful portfolio of brands:

CADDY

ERICO

HOFFMAN

ILSCO

SCHROFF

TRACHTE