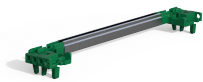


Guide Rail End Piece, Coding Type, PC, Groove Width 2.5 mm, Green (0,1" Offset)

CATALOG NUMBER

64568-095

Plastic end pieces for individual multi-piece guide rails with plastic or Aluminum extrusion mid-piece. Available as type Standard or Accessory.



CERTIFICATIONS



FEATURES

Guide rail end pieces (PC) for individual multi-piece guide rails with plastic or aluminum extrusion mid-piece

Improved fire safety properties, fulfills EN 45545-2 requirement sets R22, R23 and R24 with HL3

"Halogen-Free", according to IEC 61249-2-21

Mid-pieces available for standard PCB lengths (160, 220, 280 and 340 mm) and for special dimensions as 1000 mm version

Can be clipped into horizontal rails (Al extrusion) or into 1.5 mm thick plates

Can be bolted for higher shock and vibration requirements

Optional ESD clip for an conductive contact between PCB and horizontal rail available

PRODUCT ATTRIBUTES

Package Quantity: 1

Complies With: EN 45545-2

Material: Fiber-Reinforced Plastic

Product Family: EuropacPRO; RatiopacPRO; RatiopacPRO AIR; CompacPRO; PropacPRO; MultipacPRO; Inpac

Product Type: Rail End Piece

Type: Coding Peg

Works With: Subracks; Cases; Chassis

Package Unit: Pair

Groove Width: 2.5

ADDITIONAL PRODUCT DETAILS

Delivery is in standard pack multiples. Pricing is per individual item.

WARNING

nVent products shall be installed and used only as indicated in nVent's product instruction sheets and training materials. Instruction sheets are available at www.nvent.com and from your nVent customer service representative. Improper installation, misuse, misapplication or other failure to completely follow nVent's instructions and warnings may cause product malfunction, property damage, serious bodily injury and death and/or void your warranty.

North America

All locations
+1.763.422.2661
Chat with us:
nvent.com/schroff

Europe

Straubenhardt, Germany
+49.7082.794.0
Betschdorf, France
+33.3.88.90.64.90
Warsaw, Poland
+48.22.209.98.35
Assago, Italy
+39.02.932.7141
Chat with us:
nvent.com/schroff

Asia

Shanghai, China
+86.21.2412.6943
Qingdao, China
+86.532.8771.6101
Singapore
+65.6768.5800
Shin-Yokohama, Japan
+81.45.476.0271
Chat with us:
nvent.com/schroff

Middle East & India

Dubai, United Arab Emirates
+971.4.378.1700
Bangalore, India
+91.80.6715.2001
Istanbul, Turkey
+90.216.250.7374
Chat with us:
nvent.com/schroff



Our powerful portfolio of brands:

CADDY ERICO HOFFMAN ILSCO SCHROFF TRACHTE