

# Telecom Main Grounding Busbar



## CERTIFICATIONS



## FEATURES

Meets TIA-607-C and TIA-607-D and conforms to BICSI® recommendations

Complies with NEMA® standards

Accepts two hole lugs with 5/16" or 7/16" bolt holes (hardware not included)

Telecom grounding busbar splice kits are available to extend the length of the busbar

## SPECIFICATIONS

**Thickness (T):** 6.35 mm  
**Width (W):** 101.6 mm  
**Material:** Copper

Table 1/2

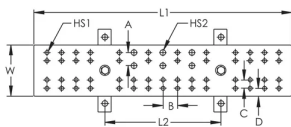
Catalog Number	Tin Plating	Length 1 (L1)	Length 2 (L2)	Hole Size 1 Number of Pairs	Hole Size 2 Number of Pairs	A
TMGBA12L15P T	Yes	305 mm	229 mm	15	3	25.4 mm

CatalogNumber	Tin Plating	Length 1 (L1)	Length 2 (L2)	Hole Size 1 Number ofPairs	Hole Size 2 Number ofPairs	A
TMGBA12L15P	No	305 mm	229 mm	15	3	25.4 mm
TMGBA24L33P T	Yes	610 mm	457 mm	33	5	25.4 mm
TMGBA20L27P	No	508 mm	229 mm	27	3	25.4 mm
TMGBA29L41P T	Yes	737 mm	457 mm	41	5	25.4 mm

Table 2/2

Catalog Number	B	C	D
TMGBA12L15PT	28.6 mm	15.9 mm	15.9 mm
TMGBA12L15P	28.6 mm	15.9 mm	15.9 mm
TMGBA24L33PT	28.6 mm	15.9 mm	15.9 mm
TMGBA20L27P	28.6 mm	15.9 mm	15.9 mm
TMGBA29L41PT	28.6 mm	15.9 mm	15.9 mm

## DIAGRAMS



## WARNING

nVent products shall be installed and used only as indicated in nVent's product instruction sheets and training materials. Instruction sheets are available at [www.nvent.com](http://www.nvent.com) and from your nVent customer service representative. Improper installation, misuse, misapplication or other failure to completely follow nVent's instructions and warnings may cause product malfunction, property damage, serious bodily injury and death and/or void your warranty.

#### North America

+1.800.753.9221

Option 1 – Customer Care

Option 2 – Technical

Support

#### Europe

Netherlands:

+31 800-0200135

France:

+33 800 901 793

#### Europe

Germany:

800 1890272

Other Countries:

+31 13 5835404

#### APAC

Shanghai:

+ 86 21 2412 1618/19

Sydney:

+61 2 9751 8500



Our powerful portfolio of brands:

**CADDY**

**ERICO**

**HOFFMAN**

**ILSCO**

**SCHROFF**

**TRACHTE**