

Universal Restraint Clip

Data Solutions



CERTIFICATIONS



FEATURES

Attaches cable brace to structure

Meets CEN/TS 17551:2021 requirements for Seismic Sway Bracing

SPECIFICATIONS

Table 1/2

Catalog Number	Article Number	Material	Finish	Brace Size	Hole Size (HS)	Thickness (T)
CSBURC12	402199	Steel	Electrogalvanized	#12, #18, #36	14mm	4.27mm
CSBURC38	402198	Steel	Electrogalvanized	#12, #18, #36	11mm	4.27mm
CSBURC38SS	402522	Stainless Steel 316 (EN 1.4401)		#12, #18, #36	11mm	4.27mm

CatalogNumber	Article Number	Material	Finish	Brace Size	Hole Size (HS)	Thickness (T)
CSBURC58	402200	Steel	Electrogalvaniz ed	#12, #18, #36	17mm	4.27mm
CSBURC58SS	402564	Stainless Steel 316 (EN 1.4401)		#12, #18, #36	17mm	4.27mm

Table 2/2

Catalog Number	Article Number	UL Listed Load	Certifications
CSBURC12	402199	3430N	ICC-ES (Seismic Cable Bracing), UL, ICC-ES, OSHPD/HCAI, cUL
CSBURC38	402198	3430N	cUL, OSHPD/HCAI, ICC-ES, ICC-ES (Seismic Cable Bracing), UL
CSBURC38SS	402522	2750N	
CSBURC58	402200	3430N	OSHPD/HCAI, ICC-ES (Seismic Cable Bracing), ICC-ES, UL, cUL
CSBURC58SS	402564	2750N	

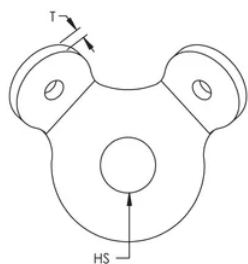
ADDITIONAL PRODUCT DETAILS

Brace member is not included.

Mount to the structure using the center hole. Loop cable through the holes in the bent tabs and swage in place.

UL Loads		
Part Number	Brace Member	Load Rating
CSBURC38	CSB12CBL	1859 N
	CSB18CBL	3434 N
	CSB36CBL	8492 N
CSBURC12	CSB12CBL	1859 N
	CSB18CBL	3434 N
	CSB36CBL	8492 N
CSBURC58	CSB12CBL	1859 N
	CSB18CBL	3434 N
	CSB36CBL	8492 N

DIAGRAMS



WARNING

nVent products shall be installed and used only as indicated in nVent's product instruction sheets and training materials. Instruction sheets are available at www.nvent.com and from your nVent customer service representative. Improper installation, misuse, misapplication or other failure to completely follow nVent's instructions and warnings may cause product malfunction, property damage, serious bodily injury and death and/or void your warranty.



Our powerful portfolio of brands:

CADDY ERICO HOFFMAN ILSCO SCHROFF TRACHTE