

1 Hole Lug

Data Solutions



FEATURES

Provides an efficient bolting surface for grounding and power applications

Electrolytic grade copper

For use with nVent ERICO Cadweld type LA connections only

SPECIFICATIONS

Material: Copper
Type: Non-NEMA®
Finish: Tinned

Table 1/2

Catalog Number	Article Number	Length (L)	Width (W)	Thickness (T)	A	Hole Size (HS)
KA102	183010	49.99mm	24.99mm	2.01mm	12mm	8.5mm
KA103	183020	49.99mm	24.99mm	3mm	12mm	8.5mm
KA115	183140	95mm	49.99mm	5.99mm	25mm	10.49mm

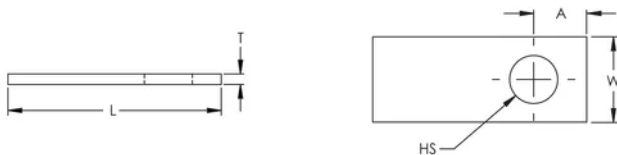
Table 2/2

Catalog Number	Article Number	Equivalent Conductor Size
KA102	183010	50.14mm ²
KA103	183020	74.9mm ²
KA115	183140	299.58mm ²

ADDITIONAL PRODUCT DETAILS

For sizes not listed, contact us.

DIAGRAMS



WARNING

nVent products shall be installed and used only as indicated in nVent's product instruction sheets and training materials. Instruction sheets are available at www.nvent.com and from your nVent customer service representative. Improper installation, misuse, misapplication or other failure to completely follow nVent's instructions and warnings may cause product malfunction, property damage, serious bodily injury and death and/or void your warranty.



Our powerful portfolio of brands:

CADDY ERICO HOFFMAN ILSCO SCHROFF TRACHTE