

# T-Series Horizontal Low Slip Sleeve, Top Fill



The top fill, low slip horizontal T-Series sleeve length is increased to reduce slip (for extreme code requirements) and when the rib pattern or spacing does not meet the minimum product specifications.

Vent holes are added to horizontal sleeves to reduce air entrapment and help ensure proper filling of the sleeve.

## FEATURES

Designed to connect horizontal reinforcing bars and angular reinforcing bars up to 45 degrees

Used to splice the same diameter bars

Additional length improves performance

Works with saw cut, flame cut and sheared bars

Can be visually inspected after installation

## SPECIFICATIONS

**Finish:** Plain

**Material:** Steel

**100% U.S. Domestic Content:** Yes

Table 1/2

Catalog Number	Rebar Size, Metric	Rebar Size, US	Rebar Size, Canada	Diameter 1 (Ø1)	Diameter 2 (Ø2)	Length 1 (L1)
RBW6555HA	16 mm	#5	15M	35 mm	22 mm	152 mm
RBW6556HA	20 mm	#6	20M	38 mm	25 mm	178 mm
RBW6557HA	22 mm	#7		41 mm	29 mm	178 mm
RBW6558HA	25 mm	#8	25M	48 mm	32 mm	178 mm

CatalogNumber	Rebar Size, Metric	Rebar Size, US	Rebar Size, Canada	Diameter 1(Ø1)	Diameter 2(Ø2)	Length 1 (L1)
RBW6559HA	28 mm	#9	30M	54 mm	38 mm	178 mm
RBW65510HA	32 mm	#10		57 mm	41 mm	191 mm
RBW65511HA	36 mm	#11	35M	64 mm	44 mm	203 mm
RBW65514HA	43 mm	#14	45M	76 mm	54 mm	229 mm
RBW65518HA	57 mm	#18	55M	95 mm	67 mm	279 mm

Table 2/2

Catalog Number	Length 2 (L2)	Length 3 (L3)	Unit Weight
RBW6555HA	76 mm	20mm	0.68 kg
RBW6556HA	89 mm	20mm	0.86 kg
RBW6557HA	89 mm	20mm	0.95 kg
RBW6558HA	89 mm	20mm	1.36 kg
RBW6559HA	89 mm	20mm	1.6 kg
RBW65510HA	95 mm	26mm	1.81 kg
RBW65511HA	102 mm	26mm	2.54 kg
RBW65514HA	114 mm	26mm	4.04 kg
RBW65518HA	140 mm	26mm	7.94 kg

**Designed to Meet:**

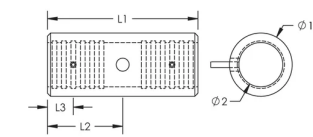
AASHTO;ABNT NBR 8548:1984;ACI 318 Type 1 (125% Specified Yield);ACI 318 Type 2 (Specified Tensile);ACI 349;ACI 359;AS3600

ADDITIONAL PRODUCT DETAILS

Prior to installation, please read and understand all of the detailed instructions and safety notices provided in the nVent LENTON Cadweld Rebar Splicing System Instruction Manual.

Sizes not shown may be available by special order. Contact your nVent LENTON representative for more information.

DIAGRAMS



WARNING

nVent products shall be installed and used only as indicated in nVent's product instruction sheets and training materials. Instruction sheets are available at [www.nvent.com](http://www.nvent.com) and from your nVent customer service representative. Improper installation, misuse, misapplication or other failure to completely follow nVent's instructions and warnings may cause product malfunction, property damage, serious bodily injury and death and/or void your warranty.

North America

+1.800.753.9221  
Option 1 – Customer Care  
Option 2 – Technical  
Support

Europe

Netherlands:  
+31 800-0200135  
France:  
+33 800 901 793

Europe

Germany:  
800 1890272  
Other Countries:  
+31 13 5835404

APAC

Shanghai:  
+ 86 21 2412 1618/19  
Sydney:  
+61 2 9751 8500



Our powerful portfolio of brands:

CADDY   ERICO   HOFFMAN   ILSCO   SCHROFF   TRACHTE