

# Drive Pin Grommet Support

The grommet support holds the drive pin and grommet in place.



## FEATURES

Color-coded and stamped with appropriate reinforcing bar size

Easily replaced when worn

## SPECIFICATIONS

Table 1/2

Catalog Number	Rebar Size, Metric	Rebar Size, US	Rebar Size, Canada	Diameter (Ø)	Length (L)	Unit Weight
ML514	20 mm	#6	20M	37 mm	23mm	0.07 kg
ML508	16 mm	#5	15M	37 mm	37mm	0.11 kg
ML507	12 mm	#4	10M	37 mm	49mm	0.16 kg

Table 2/2

Catalog Number	Color
ML514	Yellow
ML508	Orange
ML507	Red

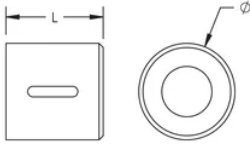
## ADDITIONAL PRODUCT DETAILS

---

Prior to installation, please read and understand the detailed instructions and safety notices provided in the nVent LENTON Quick Wedge Operator's Manual.

## DIAGRAMS

---



## WARNING

---

nVent products shall be installed and used only as indicated in nVent's product instruction sheets and training materials. Instruction sheets are available at [www.nvent.com](http://www.nvent.com) and from your nVent customer service representative. Improper installation, misuse, misapplication or other failure to completely follow nVent's instructions and warnings may cause product malfunction, property damage, serious bodily injury and death and/or void your warranty.

### North America

+1.800.753.9221  
Option 1 – Customer Care  
Option 2 – Technical  
Support

### Europe

Netherlands:  
+31 800-0200135  
France:  
+33 800 901 793

### Europe

Germany:  
800 1890272  
Other Countries:  
+31 13 5835404

### APAC

Shanghai:  
+ 86 21 2412 1618/19  
Sydney:  
+61 2 9751 8500



Our powerful portfolio of brands:

**CADDY ERICO HOFFMAN ILSCO SCHROFF TRACHTE**