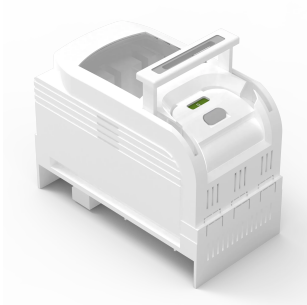


# Switch Disconnecter, W060



Spring controlled switch disconnecter without fuses.

## INDUSTRY STANDARDS

---

IEC

VDE

DNV-GL

## FEATURES

---

Description: 3-pole switch disconnecter. With multifunction handle (snap action switch mechanism). Connection at the bottom.

Rated voltage: 690 V

For busbars: 12, 15, 20, 25, 30 × 5, 10

Power dissipation at 80% load: 26,7 W

Pack quantity: 1 pc.

Approvals: IEC, VDE, DNV GL

Connection at the bottom

Rated voltage: 690 V

For busbars: 12, 15, 20, 25, 30 × 5, 10

Power dissipation at 80% load: 26,7 W

## SPECIFICATIONS

Table 1/1

Catalog Number	Height	Width	Depth	Material	Finish	Color
33540	200mm	106mm	176mm	Plastic, Steel	Smooth	Light Gray

## WARNING

nVent products shall be installed and used only as indicated in nVent's product instruction sheets and training materials. Instruction sheets are available at [www.nvent.com](http://www.nvent.com) and from your nVent customer service representative. Improper installation, misuse, misapplication or other failure to completely follow nVent's instructions and warnings may cause product malfunction, property damage, serious bodily injury and death and/or void your warranty.



Our powerful portfolio of brands:

**CADDY ERICO HOFFMAN ILSCO SCHROFF TRACHTE**