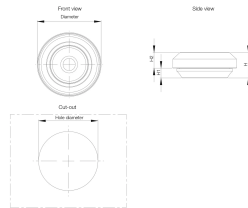


Simple Protection Cables Entry For Wall Mounted Enclosures, CES



The rubber cable gland is easy to mount, and cables and pipes can be pulled through at an angle easily without tools, ensuring that the enclosure's protection degree is maintained.

FEATURES

Description: Simple grommet manufactured in a rubber-like material. The installation does not require tools. The "pushout" membrane is a permanent seal until it is penetrated by a cable or pipe. It is equipped with a sock that closes tight around the cable and allows for it to be moved around like a "joy-stick" in the opening without endangering the IP, so it works extremely well with cables passing through at an angle. Suitable for holes in materials of 0.5 to 4.5 mm thickness.

Material: TPE (thermoplastic elastomer), halogen free.

Temperature resistance: -50 °C to +125 °C.

Finish: RAL 7035.

Protection: IP 67.

The installation does not require tools

The "pushout" membrane is a permanent seal until it is penetrated by a cable or pipe

It is equipped with a sock that closes tight around the cable and allows for it to be moved around like a "joy-stick" in the opening without endangering the IP, so it works extremely well with cables passing through at an angle

Suitable for holes in materials of 0.5 to 4.5 mm thickness

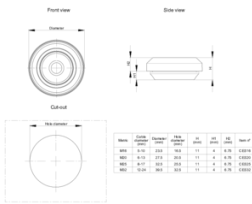
SPECIFICATIONS

| | |
|--------------------|-------------------------|
| Color: | Light Gray |
| Color Code: | RAL 7035 |
| Finish: | Smooth |
| Material: | Thermoplastic Elastomer |

Table 1/1

| Catalog Number | Height (H) | Width (W) | Depth (D) | Height (H) | Diameter | Cable Diameter Range |
|----------------|------------|-----------|-----------|------------|----------|----------------------|
| CES16 | 11mm | 24mm | 24mm | 4mm min | 23.5mm | 5 – 10mm |
| CES20 | 11mm | 28mm | 28mm | 4mm min | 27.5mm | 6 – 13mm |
| CES25 | 11mm | 33mm | 33mm | 4mm min | 39.5mm | 8 – 17mm |
| CES32 | 11mm | 40mm | 40mm | 4mm min | 39.5mm | 12 – 24mm |

DIAGRAMS



WARNING

nVent products shall be installed and used only as indicated in nVent's product instruction sheets and training materials. Instruction sheets are available at www.nvent.com and from your nVent customer service representative. Improper installation, misuse, misapplication or other failure to completely follow nVent's instructions and warnings may cause product malfunction, property damage, serious bodily injury and death and/or void your warranty.



Our powerful portfolio of brands:

CADDY ERICO HOFFMAN ILSCO SCHROFF TRACHTE