

# EMC Combinable Single Door Enclosure, MCSE



The galvanised steel single door floor standing enclosure range, MCSE, is available off the shelf in different sizes. It is designed to meet EMC requirements. An excellent Faraday effect is created, since electrical conductivity between the enclosure body and door is guaranteed. The risk for component failure, and with that unnecessary downtime, is eliminated as electromagnetic interference is avoided and water and dust are prevented from entering the enclosure. This enclosure range is well suited for applications where EMC is required.

## INDUSTRY STANDARDS

cULus\_UL

CE UKCA

EAC

GOST

IP

## FEATURES

**Material:** Frame: 1.5 mm / 1.75 mm zinc plated steel. Door: 2 mm zinc plated steel. Rear, roof and side panels: 1.5 mm zinc plated steel. Mounting plate: 3 mm galvanized steel. Bottom plates: 1 mm galvanized steel.

**Frame:** Seam welded reversed open profiles with 25 mm hole pattern, according to DIN 43660. Including integrated external hole pattern.

**Door:** With 4 hinges allowing left or right hand opening. Including door frame with 25 mm hole pattern. Sealing is attained by a conductive polyurethane EMC gasket.

**Rear panel:** Fitted by M6 torx screws. Standard facilities for rear door mounting.

**Side panels:** Supplied as an accessory.

**Roof panel:** Removable.

**Lock:** Espagnolette 4-point locking system. Does not interfere with the enclosure inner space. Standard double-bit lock with 3 mm pin. Standard inserts, cylinders, lift handles and T-handles are available as accessories.

**Mounting plate:** Double folded and slides into position. Adjustable in depth by steps of 25 mm, with the MPD02 accessory. In the enclosure delivery, mounting plate is supplied, attached on the outside of the enclosure packaging.

**Bottom plates:** Consists of three pieces. For 800 mm deep 4 pieces.

**Earthing:** All panels are earthed through their fittings and are equipped with a separate earthing stud.

**Finish:** RAL 7035 structure powder coating on the outside only.

**Protection:** IP 54 | TYPE 12 | IK 10.

**Delivery:** Frame with fitted door, rear panel, roof panel, bottom plates, mounting plate and door frame. Delivery also includes earthing bolts and EMI conductive combination gasket. Delivered on a pallet which is identical to the width of the

enclosure to allow baying without removal. All packing material is recyclable.

Note: Also available in stainless steel (MCSSE).

Electric conductivity between the enclosure's body and door is guaranteed, which ensures a good Faraday effect is created

Customers can receive enclosures with a short delivery time, that match their size requirements

Component and equipment failure, and unnecessary downtime is avoided as the components are protected from electromagnetic interferences as well as from water and dust entering the enclosure

Galvanised steel side panels, SPME, need to be ordered separately, to close individual enclosures and enclosure assembly's, to ensure the stated protection degree and EMC performance is achieved

Only EMC rated accessories or peripherals that affect the enclosure's external walls should be used, using other accessories or peripherals will downgrade the enclosure's EMC performance

SPECIFICATIONS

Finish:	Galvanized
Material:	Galvanized Steel
Color:	Light Gray
Color Code:	RAL 7035

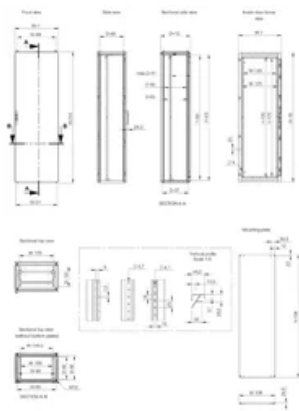
Table 1/1					
Catalog Number	Height (H)	Width (W)	Depth (D)	Max Mounting Depth	Quick Ship
MCSE20086R5	2000mm	800mm	600mm	559mm	No
MCSE20088R5	2000mm	800mm	800mm	759mm	No

ADDITIONAL PRODUCT DETAILS

All the MCS standard sizes are available as an EMC version on request, including other dimensions. For EMC sidepanels see SPME.

Also available in stainless steel (MCSSE)

DIAGRAMS



WARNING

nVent products shall be installed and used only as indicated in nVent's product instruction sheets and training materials. Instruction sheets are available at [www.nvent.com](http://www.nvent.com) and from your nVent customer service representative. Improper installation, misuse, misapplication or other failure to completely follow nVent's instructions and warnings may cause product malfunction, property damage, serious bodily injury and death and/or void your warranty.



Our powerful portfolio of brands:

**CADDY   ERICO   HOFFMAN   ILSCO   SCHROFF   TRACHTE**