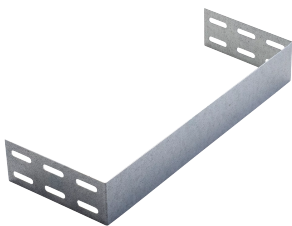


WBT Performance Cable Tray Accessory, Blind End, 101.6X203.2, Pregalvanized

CATALOG NUMBER

WBTBE4X8



The nVent CADDY WBT Performance Cable Tray Blind End is used for terminal ends of cable tray that cannot be open. Fasten the blind end to the open end of wire basket tray to act as a barrier stop and serve as the end of a section.

FEATURES

Builds stability and creates an aesthetically clean end of tray

Can be used to secure an electrical box to side of tray

PRODUCT ATTRIBUTES

Material: Steel

Finish: Pregalvanized

Height: 101.6 mm

Width: 203.2 mm

Length: 221.06mm

Unit Weight: 0.454 kg

WARNING

nVent products shall be installed and used only as indicated in nVent's product instruction sheets and training materials. Instruction sheets are available at www.nvent.com and from your nVent customer service representative. Improper installation, misuse, misapplication or other failure to completely follow nVent's instructions and warnings may cause product malfunction, property damage, serious bodily injury and death and/or void your warranty.

North America

+1.800.753.9221

Option 1 – Customer Care

Option 2 – Technical

Support

Europe

Netherlands:

+31 800-0200135

France:

+33 800 901 793

Europe

Germany:

800 1890272

Other Countries:

+31 13 5835404

APAC

Shanghai:

+ 86 21 2412 1618/19

Sydney:

+61 2 9751 8500



Our powerful portfolio of brands:

CADDY

ERICO

HOFFMAN

ILSCO

SCHROFF

TRACHTE

