

# T-Series Horizontal Transition Sleeve, Side Fill



The side fill horizontal T-Series sleeve has vent holes located 90 degrees from the tap hole to facilitate side fill installations when the interferences of the structure will not allow top filling. The vent holes are added to horizontal sleeves to reduce air entrapment and help ensure proper filling of the sleeve.

## FEATURES

Designed to connect horizontal reinforcing bars and angular reinforcing bars up to 45 degrees

Used to splice different diameter bars

Works with saw cut, flame cut and sheared bars

Can be visually inspected after installation

Available with extended sleeve lengths

## SPECIFICATIONS

Table 1/3

Catalog Number	Material	Finish	100% U.S. Domestic Content	Sleeve	Rebar Size, Metric	Rebar Size, US
RBT1418101HS A	Steel	Plain	Yes	Standard Length	57 mm, 43 mm	#18, #14

Table 2/3

Catalog Number	Rebar Size, Canada	Diameter 1 (Ø1)	Diameter 2 (Ø2)	Length 1 (L1)	Length 2 (L2)	Length 3 (L3)
RBT1418101HS A	55M, 45M	86 mm	67 mm	165 mm	76 mm	26mm

Table 3/3

Catalog Number	Unit Weight	Package Quantity
----------------	-------------	------------------

RBT1418101HSA	3.55 kg	6
---------------	---------	---

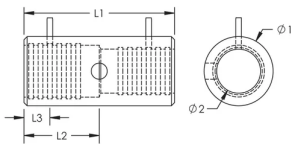
**Designed to Meet:** AASHTO;ABNT NBR 8548:1984;ACI 318 Type 1 (125% Specified Yield);ACI 318 Type 2 (Specified Tensile);ACI 349;ACI 359;AS3600

## ADDITIONAL PRODUCT DETAILS

Prior to installation, please read and understand all of the detailed instructions and safety notices provided in the nVent LENTON Cadweld Rebar Splicing System Instruction Manual.

Sizes not shown may be available by special order. Contact your nVent LENTON representative for more information.

## DIAGRAMS



## WARNING

nVent products shall be installed and used only as indicated in nVent's product instruction sheets and training materials. Instruction sheets are available at [www.nvent.com](http://www.nvent.com) and from your nVent customer service representative. Improper installation, misuse, misapplication or other failure to completely follow nVent's instructions and warnings may cause product malfunction, property damage, serious bodily injury and death and/or void your warranty.

### North America

+1.800.753.9221  
Option 1 – Customer Care  
Option 2 – Technical  
Support

### Europe

Netherlands:  
+31 800-0200135  
France:  
+33 800 901 793

### Europe

Germany:  
800 1890272  
Other Countries:  
+31 13 5835404

### APAC

Shanghai:  
+ 86 21 2412 1618/19  
Sydney:  
+61 2 9751 8500



Our powerful portfolio of brands:

**CADDY ERICO HOFFMAN ILSCO SCHROFF TRACHTE**