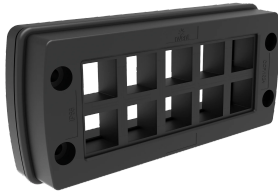


# Cable Entry Gland Plate Connected Inside, CCFI



The CCFI range is a fast, safe and versatile modular cable entry system that features secure seals and strain relief for pre-assembled and unassembled cables with our without connectors.

## INDUSTRY STANDARDS

UL 508A Component Recognized; File No. E61997

UL94 V-0 Flammability

NEMA Type 1, 12, 4X (indoor only)

CE

IP66

## FEATURES

Delivery: Frame + Inlay for CCFGS

Description: CCFI cable entry is quick and easy to assemble. It is made of a sturdy, glass-fiber reinforced plastic. With an IP66 rating, the foam seal helps ensure an optimal seal. The system comes prepared with inlays to fit small grommets (CCFGS). CCFG grommets needs to be ordered separately. CCFD dividers can be bought separately if a different configuration is needed.

Finish: Black

Flammability: UL94 V-0

Material: Polyamide 6.6 / TPE

Pack quantity: 1pc

Protection: IP66, NEMA 1, 4x, 12 (Indoor use only)

Temperature resistance: -40°C to +120°C

Grommets sold separately

Alternate inlays/dividers for different grommet configurations sold separately

## SPECIFICATIONS

Table 1/1

Catalog Number	Article Number	Cable Entry Quantity	Cutout Size	Height	Width	Depth
CCFI816	58317	8	91 x 46mm	126mm	70mm	19.6mm
CCFI14	58315	6	46 x 46mm	81mm	70mm	19.6mm
CCFI1024	58318	10	113 x 46mm	153mm	70mm	19.6mm
CCFI610	58316	6	113 x 46mm	106mm	70mm	19.6mm

## WARNING

nVent products shall be installed and used only as indicated in nVent's product instruction sheets and training materials. Instruction sheets are available at [www.nvent.com](http://www.nvent.com) and from your nVent customer service representative. Improper installation, misuse, misapplication or other failure to completely follow nVent's instructions and warnings may cause product malfunction, property damage, serious bodily injury and death and/or void your warranty.



Our powerful portfolio of brands:

**CADDY ERICO HOFFMAN ILSCO SCHROFF TRACHTE**