

# nVent LENTON Interlok Standard Grout-Fill Coupler, Plain



## CERTIFICATIONS



## FEATURES

Designed to splice the same diameter bars

Smaller bars can be installed into the over-sized cavity end if required

Over-sized cavity allows for greater field tolerance

Taper-threaded end helps prevent movement of the reinforcing bars and eliminate misalignment

Requires less grout than most competitive systems

## SPECIFICATIONS

**Material:** Cast Iron

**Finish:** Plain

**Packaging:** Standard

Table 1/3

Catalog Number	Article Number	Rebar Size, Metric	Rebar Size, US	Rebar Size, Canada	Diameter 1 (Ø1)	Diameter 2 (Ø2)
----------------	----------------	--------------------	----------------	--------------------	-----------------	-----------------

LK5		16 mm	#5	15M	65 mm	48 mm
LK16		16 mm	#5	15M	59 mm	41 mm
LK11	145605	36 mm	#11	35M	80 mm	62 mm
LK7	145585	22 mm	#7		65 mm	48 mm
LK6	145580	20 mm	#6	20M	65 mm	48 mm
LK8	145590	25 mm	#8	25M	68 mm	51 mm
LK20		20 mm	#6	20M	62 mm	45 mm
LK9	145595	28 mm	#9	30M	71 mm	54 mm
LK25		25 mm	#8	25M	68 mm	51 mm
LK10	145600	32 mm	#10		76 mm	59 mm
LK12		38 mm			94 mm	70 mm
LK36		36 mm	#11	35M	81 mm	62 mm
LKT14	145611	43 mm	#14	45M	94 mm	70 mm
LK40		40 mm			94 mm	70 mm

Table 2/3

Catalog Number	Article Number	Length 1 (L1)	Length 2 (L2)	Bar Depth (BD)	Unit Weight	Package Quantity
LK5		200 mm	156 mm	22mm	1.98 kg	12
LK16		201 mm	168 mm	24mm	1.69 kg	110
LK11	145605	305 mm	251 mm	43mm	3.63 kg	1

CatalogNumber	Article Number	Length 1 (L1)	Length 2 (L2)	Bar Depth (BD)	Unit Weight	Package Quantity
LK7	145585	200 mm	156 mm	32mm	1.94 kg	1
LK6	145580	200 mm	156 mm	28mm	1.96 kg	12
LK8	145590	219 mm	178 mm	34mm	2.15 kg	8
LK20		226 mm	178 mm	35mm	1.98 kg	12
LK9	145595	248 mm	203 mm	38mm	2.44 kg	8
LK25		228 mm	178 mm	40mm	2.26 kg	8
LK10	145600	275 mm	229 mm	40mm	2.84 kg	8
LK12		386 mm	324 mm	44mm	7.14 kg	4
LK36		313 mm	251 mm	52mm	4.04 kg	8
LKT14	145611	386 mm	324 mm	56mm	7.26 kg	4
LK40		386 mm	324 mm	57mm	6.33 kg	4

Table 3/3

Catalog Number	Article Number	Certifications
LK5		
LK16		LA City Approval, IAPMO®-UES
LK11	145605	IAPMO®-UES, LA City Approval
LK7	145585	IAPMO®-UES, LA City Approval
LK6	145580	IAPMO®-UES, LA City Approval
LK8	145590	LA City Approval, IAPMO®-UES

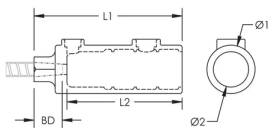
Catalog Number	Article Number	Certifications
LK20		IAPMO®-UES, LA City Approval
LK9	145595	LA City Approval, IAPMO®-UES
LK25		
LK10	145600	IAPMO®-UES, LA City Approval
LK12		
LK36		
LKT14	145611	LA City Approval, IAPMO®-UES
LK40		

## ADDITIONAL PRODUCT DETAILS

Bar dimensions and weights listed may vary by region. Coupler sizes not shown may be available by special order. Contact your nVent LENTON representative for more information.

Prior to installation, please read and understand the detailed instructions and safety notices provided in the nVent LENTON Interlok Instruction Manual.

## DIAGRAMS



## WARNING

nVent products shall be installed and used only as indicated in nVent's product instruction sheets and training materials. Instruction sheets are available at [www.nvent.com](http://www.nvent.com) and from your nVent customer service representative. Improper installation, misuse, misapplication or other failure to completely follow nVent's instructions and warnings may cause product malfunction, property damage, serious bodily injury and death and/or void your warranty.

#### North America

+1.800.753.9221

Option 1 – Customer Care

Option 2 – Technical

Support

#### Europe

Netherlands:

+31 800-0200135

France:

+33 800 901 793

#### Europe

Germany:

800 1890272

Other Countries:

+31 13 5835404

#### APAC

Shanghai:

+ 86 21 2412 1618/19

Sydney:

+61 2 9751 8500



Our powerful portfolio of brands:

**CADDY**

**ERICO**

**HOFFMAN**

**ILSCO**

**SCHROFF**

**TRACHTE**