

nVent LENTON Interlok Grommet



The nVent LENTON Grommet is used in conjunction with the nVent LENTON Bolted Form Mount and nVent LENTON Toggle Form Mount. These Grommets are used to secure nVent LENTON Interlok Grout-Fill Coupler variants in repeatable locations in the formwork. Once a Grout-Fill Coupler is placed over a Grommet, the Form Mount bolt is tightened, which expands the outside diameter of the Grommet, thus holding the Grout-Fill Coupler in place.

FEATURES

Color-coded for the appropriate coupler size

Durable and reusable

SPECIFICATIONS

Material: Polyester Urethane

Table 1/2

| Catalog Number | Article Number | Diameter 1 (Ø1) | Diameter 2 (Ø2) | Length (L) | For Use With | Color |
|----------------|----------------|-----------------|-----------------|------------|---------------|--------|
| LK307A | 145811 | 46 mm | 19 mm | 52mm | LK5, LK6, LK7 | Blue |
| LK308A | 145812 | 49 mm | 19 mm | 52mm | LK8 | Red |
| LK316A | | 40 mm | 19 mm | 51mm | LK16 | Black |
| LK320A | | 43 mm | 19 mm | 51mm | LK20 | Yellow |
| LK309A | 145813 | 52 mm | 19 mm | 52mm | LK9 | Black |
| LK310A | 145814 | 57 mm | 19 mm | 52mm | LK10 | Yellow |

| CatalogNumber | Article Number | Diameter 1(Ø1) | Diameter 2(Ø2) | Length (L) | For Use With | Color |
|---------------|----------------|----------------|----------------|------------|----------------------|-------|
| LK311A | 145815 | 60 mm | 19 mm | 52mm | LK11 | Blue |
| LK314A | 145816 | 67 mm | 19 mm | 52mm | LK12, LK40, LKT14 | Red |
| LK318A | 145817 | 83 mm | 19 mm | 52mm | LKT18, LKT50 | Black |

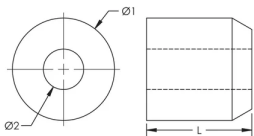
Table 2/2

| Catalog Number | Article Number | Unit Weight |
|----------------|----------------|-------------|
| LK307A | 145811 | 0.08 kg |
| LK308A | 145812 | 0.09 kg |
| LK316A | | 0.12 kg |
| LK320A | | 0.15 kg |
| LK309A | 145813 | 0.11 kg |
| LK310A | 145814 | 0.13 kg |
| LK311A | 145815 | 0.15 kg |
| LK314A | 145816 | 0.22 kg |
| LK318A | 145817 | 0.5 kg |

ADDITIONAL PRODUCT DETAILS

Prior to installation, please read and understand the detailed instructions and safety notices provided in the nVent LENTON Interlok Instruction Manual.

DIAGRAMS



WARNING

nVent products shall be installed and used only as indicated in nVent's product instruction sheets and training materials. Instruction sheets are available at www.nvent.com and from your nVent customer service representative. Improper installation, misuse, misapplication or other failure to completely follow nVent's instructions and warnings may cause product malfunction, property damage, serious bodily injury and death and/or void your warranty.

North America

+1.800.753.9221

Option 1 – Customer Care

Option 2 – Technical

Support

Europe

Netherlands:

+31 800-0200135

France:

+33 800 901 793

Europe

Germany:

800 1890272

Other Countries:

+31 13 5835404

APAC

Shanghai:

+ 86 21 2412 1618/19

Sydney:

+61 2 9751 8500



Our powerful portfolio of brands:

CADDY

ERICO

HOFFMAN

ILSCO

SCHROFF

TRACHTE