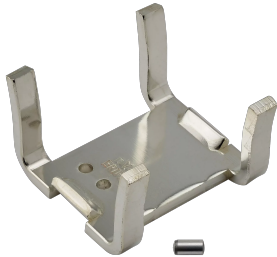


# nVent ERIFLEX Flexbus HCBC Plate

## Data Solutions



### CERTIFICATIONS



### FEATURES

Rigid tinned copper part provides strong electrical contact to maintain braid expansion during compression

HCBC Plate allows Flexbus Conductor insulation to overlap the connection palm

Tinned copper allows for copper or aluminum conductor connections

Installs quickly and easily

RoHS compliant

### SPECIFICATIONS

**Material:** Copper

**Finish:** Tinned

Table 1/2

Catalog Number	Article Number	A	B	C	D	Thickness (T)
----------------	----------------	---	---	---	---	---------------

FLEXPLATE50	508180	65mm	63mm	45mm	41mm	5mm
FLEXPLATE100	508181	115mm	63mm	45mm	51mm	5mm

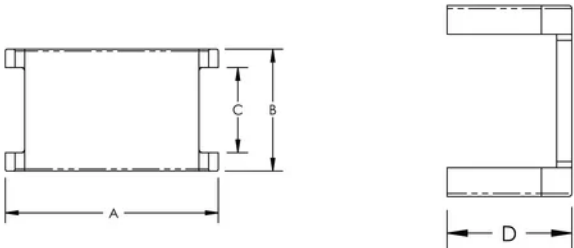
Table 2/2			
Catalog Number	Article Number	Conductor Size	Unit Weight
FLEXPLATE50	508180	220 mm², 360 mm², 545 mm², 640 mm²	0.16kg
FLEXPLATE100	508181	960 mm², 1280 mm², 1810 mm²	0.32kg

### ADDITIONAL PRODUCT DETAILS

It is mandatory to use the HCBC Clamp associated with the HCBC Plate for proper Flexbus Conductor connection.

It is mandatory to use the PIN associated with the HCBC Plate for proper connection mechanical resistance.

### DIAGRAMS



### WARNING

nVent products shall be installed and used only as indicated in nVent's product instruction sheets and training materials. Instruction sheets are available at [www.nvent.com](http://www.nvent.com) and from your nVent customer service representative. Improper installation, misuse, misapplication or other failure to completely follow nVent's instructions and warnings may cause product malfunction, property damage, serious bodily injury and death and/or void your warranty.



Our powerful portfolio of brands:

**CADDY   ERICO   HOFFMAN   ILSCO   SCHROFF   TRACHTE**