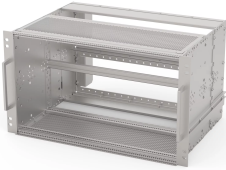


EuropacPRO 19" Subrack Kit for Railway, Shielded, SNCF, CompactPCI

Subrack for Railway applications, conform to SNCF Standard, shielded version for CompactPCI applications.



CERTIFICATIONS



FEATURES

SNCF listed, EuropacPRO-fer, tested to NF F 61-005 and NF F 60-002

The 19" bracket is firmly fixed to the side panel (tox-cold welded) and is especially suited for high mechanical stresses (vibration resistance)

Lateral support bars to NFF standard facilitate insertion of subrack into the (cabinet) frame. The double 19" screwing position adds to additionally safety (NFF standard)

IP 20, in accordance with IEC 60529

EMC of approximately 40 dB at 1 GHz, 30 dB at 2 GHz, assuming that the front is covered with shielded front panels, testing in accordance with VG 95373 part 15

Aluminum construction

Modifications such as cutouts, different finishes or dimensions available

Supplied as space-saving flat-pack

SPECIFICATIONS

Static Load: 15kg

Depth: 320mm

Material: Aluminum
Finish: Anodized; Passivated
Complies With: IEC 60297-3-103; IEEE 1101.10; SNCF NFF 61005; SNCF NFF 60002
Product Type: Subrack/Chassis
EMC Shielding: Yes

Table 1/2

Catalog Number	Rack Height	Rack Width	Package Quantity	For Mounting	Board Depth	Gasket Type
21500-046	6U	84HP	1	Backplane	160mm	Textile EMC
21500-072	6U	36HP	1	Backplane	160mm	Textile EMC
21500-069	3U	36HP	1	Backplane	160mm	Textile EMC
21500-047	3U	84HP	1	Backplane	160mm	Textile EMC

Table 2/2

Catalog Number	Shock and Vibration Tolerance	Handle Included	Mounting	Certifications	Quick Ship
21500-046	5g (force)	Yes	Rack	RoHS, SNCF	No
21500-072	5g (force)	Yes	Rack	RoHS	No
21500-069	5g (force)	Yes	Rack	RoHS	No
21500-047	5g (force)	Yes	Rack	SNCF, RoHS	No

ADDITIONAL PRODUCT DETAILS

Fer = ferroviaire = French Railways, 1 T = 4 HP = 20.32 mm Receptacle/mounting frame for subracks, stainless steel, 9 T or 21 T on request.

Version 9 T available on request; Test reports available online.

Guide rails color according to IEEE 1101.10 red = space for CPU-board; grey = space for peripheral boards; green = space for CompactPCI; 19"-power supplies 0,1" offset.

Individual configuration: broad range of variants in height, width and depth; guide rails for a wide variety of applications; interior options; accessories and mounting material.

WARNING

nVent products shall be installed and used only as indicated in nVent's product instruction sheets and training materials. Instruction sheets are available at www.nvent.com and from your nVent customer service representative. Improper installation, misuse, misapplication or other failure to completely follow nVent's instructions and warnings may cause product malfunction, property damage, serious bodily injury and death and/or void your warranty.

North America

All locations
+1.763.422.2661
Chat with us:
nvent.com/schroff

Europe

Straubenhardt, Germany
+49.7082.794.0
Betschdorf, France
+33.3.88.90.64.90
Warsaw, Poland
+48.22.209.98.35
Assago, Italy
+39.02.932.7141
Chat with us:
nvent.com/schroff

Asia

Shanghai, China
+86.21.2412.6943
Qingdao, China
+86.532.8771.6101
Singapore
+65.6768.5800
Shin-Yokohama, Japan
+81.45.476.0271
Chat with us:
nvent.com/schroff

Middle East & India

Dubai, United Arab Emirates
+971.4.378.1700
Bangalore, India
+91.80.6715.2001
Istanbul, Turkey
+90.216.250.7374
Chat with us:
nvent.com/schroff



Our powerful portfolio of brands:

CADDY ERICO HOFFMAN ILSCO SCHROFF TRACHTE