

# T-Series Horizontal Sleeve, Side Fill



The side fill horizontal T-Series sleeve has vent holes located 90 degrees from the tap hole to facilitate side fill installations when the interferences of the structure will not allow top filling. Vent holes are added to horizontal sleeves to reduce air entrapment and help ensure proper filling of the sleeve.

## FEATURES

Designed to connect horizontal reinforcing bars and angular reinforcing bars up to 45 degrees

Used to splice the same diameter bars

Works with saw cut, flame cut and sheared bars

Can be visually inspected after installation

Available with extended sleeve lengths

## SPECIFICATIONS

**Finish:** Plain

**Material:** Steel

**100% U.S. Domestic Content:** Yes

Table 1/2

| Catalog Number | Sleeve          | Rebar Size, Metric | Rebar Size, US | Rebar Size, Canada | Diameter 1 (Ø1) | Diameter 2 (Ø2) |
|----------------|-----------------|--------------------|----------------|--------------------|-----------------|-----------------|
| RBT6101HSA     | Standard Length | 20 mm              | #6             | 20M                | 38 mm           | 25 mm           |
| RBT7101HSA     | Standard Length | 22 mm              | #7             |                    | 41 mm           | 29 mm           |
| RBT1091HSA     | Standard Length | 32 mm              | #10            |                    | 57 mm           | 41 mm           |
| RBT11101HSA    | Standard Length | 36 mm              | #11            | 35M                | 64 mm           | 44 mm           |

| CatalogNumber | Sleeve          | Rebar Size, Metric | Rebar Size, US | Rebar Size, Canada | Diameter 1(Ø1) | Diameter 2(Ø2) |
|---------------|-----------------|--------------------|----------------|--------------------|----------------|----------------|
| RBT81011HSA   | Extended Length | 25 mm              | #8             | 25M                | 48 mm          | 32 mm          |
| RBT8101HSA    | Standard Length | 25 mm              | #8             | 25M                | 48 mm          | 32 mm          |
| RBT9101HSA    | Standard Length | 28 mm              | #9             | 30M                | 54 mm          | 38 mm          |
| RBT111011HSA  | Extended Length | 36 mm              | #11            | 35M                | 64 mm          | 44 mm          |
| RBT14101HSA   | Standard Length | 43 mm              | #14            | 45M                | 76 mm          | 54 mm          |
| RBT1891HSA    | Standard Length | 57 mm              | #18            | 55M                | 95 mm          | 67 mm          |

| Table 2/2      |               |               |               |             |
|----------------|---------------|---------------|---------------|-------------|
| Catalog Number | Length 1 (L1) | Length 2 (L2) | Length 3 (L3) | Unit Weight |
| RBT6101HSA     | 127 mm        | 64 mm         | 20mm          | 0.63 kg     |
| RBT7101HSA     | 127 mm        | 64 mm         | 20mm          | 0.69 kg     |
| RBT1091HSA     | 140 mm        | 70 mm         | 20mm          | 1.34 kg     |
| RBT11101HSA    | 152 mm        | 76 mm         | 20mm          | 1.93 kg     |
| RBT81011HSA    | 152 mm        | 76 mm         | 20mm          | 1.38 kg     |
| RBT8101HSA     | 127 mm        | 64 mm         | 20mm          | 0.98 kg     |
| RBT9101HSA     | 127 mm        | 64 mm         | 20mm          | 1.14 kg     |
| RBT111011HSA   | 178 mm        | 89 mm         | 26mm          | 2.25 kg     |
| RBT14101HSA    | 178 mm        | 89 mm         | 26mm          | 3.17 kg     |
| RBT1891HSA     | 229 mm        | 114 mm        | 26mm          | 6.51 kg     |

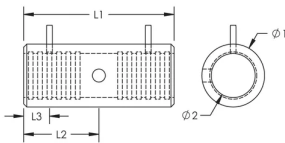
**Designed to** AASHTO;ABNT NBR 8548:1984;ACI 318 Type 1 (125% Specified Yield);ACI 318 Type 2 (Specified  
**Meet:** Tensile);ACI 349;ACI 359;AS3600

ADDITIONAL PRODUCT DETAILS

Prior to installation, please read and understand all of the detailed instructions and safety notices provided in the nVent LENTON Cadweld Rebar Splicing System Instruction Manual.

Sizes not shown may be available by special order. Contact your nVent LENTON representative for more information.

DIAGRAMS



WARNING

nVent products shall be installed and used only as indicated in nVent's product instruction sheets and training materials. Instruction sheets are available at [www.nvent.com](http://www.nvent.com) and from your nVent customer service representative. Improper installation, misuse, misapplication or other failure to completely follow nVent's instructions and warnings may cause product malfunction, property damage, serious bodily injury and death and/or void your warranty.

North America

+1.800.753.9221  
Option 1 – Customer Care  
Option 2 – Technical  
Support

Europe

Netherlands:  
+31 800-0200135  
France:  
+33 800 901 793

Europe

Germany:  
800 1890272  
Other Countries:  
+31 13 5835404

APAC

Shanghai:  
+ 86 21 2412 1618/19  
Sydney:  
+61 2 9751 8500



Our powerful portfolio of brands:

CADDY   ERICO   HOFFMAN   ILSCO   SCHROFF   TRACHTE