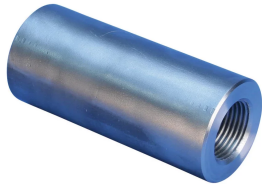


S13 Metric Parallel Bolt Coupler, Stainless Steel



Stainless steel couplers are specified whenever corrosive environmental conditions combine with the need for high load-bearing strength. nVent LENTON stainless steel couplers are commonly used when the construction materials may come into contact with de-icing salts, salt water or marine environments. Typical applications include bridges and bridge decks.

FEATURES

Provides continuity between reinforcing bar and ISO® 965 metric all-thread rod or bolts

May be used to anchor load-bearing equipment to foundations, columns or walls

Machined from non-weldable grades of material, but can be tack welded

SPECIFICATIONS

Finish:	Plain
Material:	Stainless Steel Duplex 2205 (EN 1.4462)
Design Version:	Worldwide (Globally Available Materials)

Table 1/2

Catalog Number	Rebar Size, Metric	Rebar Size, US	Rebar Size, Canada	Diameter (Ø)	Length (L)	A
EL12S13SSN	12 mm	#4	10M	25.4 mm	58mm	33 mm
EL16S13SSN	16 mm	#5	15M	30 mm	68mm	37 mm
EL20S13SSN	20 mm	#6	20M	35 mm	98mm	55 mm
EL25S13SSN	25 mm	#8	25M	45.8 mm	110mm	61 mm
EL32S13ASSN	32 mm	#10		55 mm	128mm	73 mm

CatalogNumber	Rebar Size, Metric	Rebar Size, US	Rebar Size, Canada	Diameter (Ø)	Length (L)	A
EL32S13SSN	32 mm	#10		55 mm	125mm	70 mm

Table 2/2

Catalog Number	Bar Depth (BD)	Thread Size (TS)	Thread Depth (TD)	Unit Weight
EL12S13SSN	19mm	M16	19mm	0.16 kg
EL16S13SSN	24mm	M20	23mm	0.49 kg
EL20S13SSN	35mm	M24	27mm	0.63 kg
EL25S13SSN	40mm	M30	33mm	0.92 kg
EL32S13ASSN	45mm	M42	46mm	1.3 kg
EL32S13SSN	45mm	M39	43mm	1.46 kg

Designed to Meet: AASHTO;ABNT NBR 8548:1984;ACI 318 Type 1 (125% Specified Yield);ACI 318 Type 2 (Specified Tensile);ACI 349;ACI 359;AS3600

ADDITIONAL PRODUCT DETAILS

Bar dimensions and weights listed may vary by region. Coupler sizes not shown may be available by special order. Contact your nVent LENTON representative for more information.

Coupler supplied without bolt.

Bolt may be replaced by threaded rod of same class/grade.

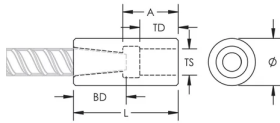
All calculations based on a minimum bolt engagement equal to Thread Depth (TD).

System Capacity based on bolt to coupler connection. For rebar to coupler connection, refer to applicable building codes and approvals or contact your nVent LENTON representative.

Suffix "EE" has been added to some part numbers to clarify design version among regions.

Bolt-to-Coupler Capacity (kN)					
Part Number	Grade 4.8	Grade 5.8	Grade 8.8	Grade 10.9	Grade 12.9
EL12S13SSN	62.7	78.3	109.8	109.8	109.8
EL16S13SSN	97.9	122.4	162.9	162.9	162.9
EL20S13SSN	141	176.3	282	332.3	332.3
EL25S13SSN	224.2	280.3	448.5	560.5	560.5
EL32S13ASSN	448.4	560.5	896.7	1120.9	1197.1
EL32S13SSN	390.3	487.9	780.6	783.8	783.8

DIAGRAMS



WARNING

nVent products shall be installed and used only as indicated in nVent's product instruction sheets and training materials. Instruction sheets are available at www.nvent.com and from your nVent customer service representative. Improper installation, misuse, misapplication or other failure to completely follow nVent's instructions and warnings may cause product malfunction, property damage, serious bodily injury and death and/or void your warranty.

North America

+1.800.753.9221

Option 1 – Customer Care

Option 2 – Technical

Support

Europe

Netherlands:

+31 800-0200135

France:

+33 800 901 793

Europe

Germany:

800 1890272

Other Countries:

+31 13 5835404

APAC

Shanghai:

+ 86 21 2412 1618/19

Sydney:

+61 2 9751 8500



Our powerful portfolio of brands:

CADDY

ERICO

HOFFMAN

ILSCO

SCHROFF

TRACHTE