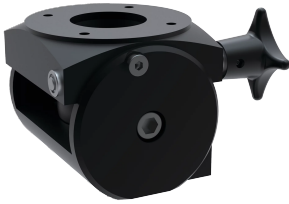


# Syspend 281-Max Angle Adapter Stepless 30 Degrees



Syspend 281-Max Angle Adapter enables enclosure angle to be adjusted forward or backward up to 30 degrees. Must be used in conjunction with a coupling (not compatible with S2MFC48). Maximum load bearing capacity is 67 lb. (30.4 kg).

## FEATURES

---

Gasket and mounting hardware are included

Assembled Syspend 281 HMI Arm System has a max weight load of 281 lb. (127.7 kg)

## SPECIFICATIONS

Table 1/1

| Catalog Number | Article Number | Height | Width | Depth | Material | Finish        |
|----------------|----------------|--------|-------|-------|----------|---------------|
| S2MAA          | 18812          | 100mm  | 108mm | 120mm | Aluminum | Powder Coated |

## WARNING

nVent products shall be installed and used only as indicated in nVent's product instruction sheets and training materials. Instruction sheets are available at [www.nvent.com](http://www.nvent.com) and from your nVent customer service representative. Improper installation, misuse, misapplication or other failure to completely follow nVent's instructions and warnings may cause product malfunction, property damage, serious bodily injury and death and/or void your warranty.



Our powerful portfolio of brands:

**CADDY ERICO HOFFMAN ILSCO SCHROFF TRACHTE**