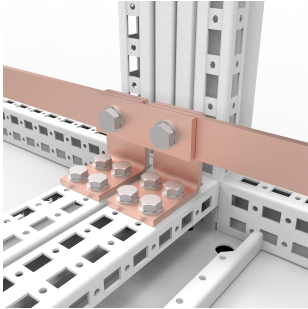


# PE Pen Baying Bracket, EBB



Prefabricated baying bracket designed and tested with nVent HOFFMAN enclosures.

## FEATURES

---

Description: Baying bracket to be used when ECB copper bars need to be connected between enclosures.

Material: Copper.

Delivery: 5 pcs. of copper brackets.

SPECIFICATIONS

Material: Copper  
Finish: Mill

Table 1/1					
Catalog Number	Height	Width	Depth	Product Family	Quick Ship
EBB3005	5mm	88mm	30mm	IEC General Accessories	No
EBB3010	10mm	88mm	30mm	IEC General Accessories	No
EBB4010	10mm	88mm	40mm	IEC General Accessories	No
EBB8010	10mm	88mm	80mm	IEC General Accessories	No

WARNING

nVent products shall be installed and used only as indicated in nVent's product instruction sheets and training materials. Instruction sheets are available at [www.nvent.com](http://www.nvent.com) and from your nVent customer service representative. Improper installation, misuse, misapplication or other failure to completely follow nVent's instructions and warnings may cause product malfunction, property damage, serious bodily injury and death and/or void your warranty.



Our powerful portfolio of brands:

CADDY   ERICO   HOFFMAN   ILSCO   SCHROFF   TRACHTE