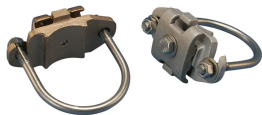


Notched Cast U-Bolt Pipe Clamp



FEATURES

Clamp for bonding of handrails and pipes to the lightning protection system

Notched hole makes assembly easy and eliminates loose hardware

Listed to UL® 96

SPECIFICATIONS

Conductor Size, UL: Class 1 - Class 2 (4/0 Max)

Table 1/2

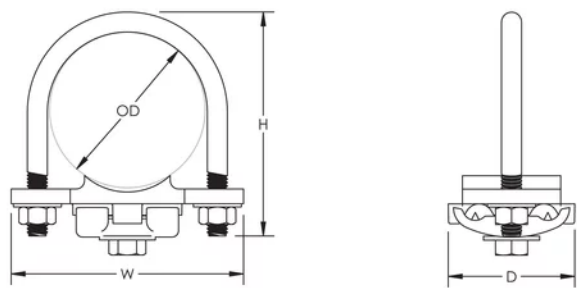
Catalog Number	Material	Finish	Outer Diameter (OD)	Depth (D)	Height (H)	Width (W)
LPA571	Aluminum	Bare	50.8 - 63.5 mm	49.78mm	88.9 mm	92.2 mm
LPC571	Brass	Bare	50.8 - 63.5 mm	49.78mm	88.9 mm	92.2 mm
LPC571L	Brass	Tinned	50.8 - 63.5 mm	49.78mm	88.9 mm	92.2 mm

Table 2/2

Catalog Number	Unit Weight
LPA571	0.18 kg

Catalog Number	Unit Weight
LPC571	0.38 kg
LPC571L	0.38 kg

DIAGRAMS



WARNING

nVent products shall be installed and used only as indicated in nVent's product instruction sheets and training materials. Instruction sheets are available at www.nvent.com and from your nVent customer service representative. Improper installation, misuse, misapplication or other failure to completely follow nVent's instructions and warnings may cause product malfunction, property damage, serious bodily injury and death and/or void your warranty.

⚠ WARNING: This product can expose you to chemicals including lead, which is known to the State of California to cause cancer and birth defects or other reproductive harm. For more information go to www.P65Warnings.ca.gov.

North America

+1.800.753.9221
Option 1 – Customer Care
Option 2 – Technical
Support

Europe

Netherlands:
+31 800-0200135
France:
+33 800 901 793

Europe

Germany:
800 1890272
Other Countries:
+31 13 5835404

APAC

Shanghai:
+ 86 21 2412 1618/19
Sydney:
+61 2 9751 8500



Our powerful portfolio of brands:

CADDY ERICO HOFFMAN ILSCO SCHROFF TRACHTE