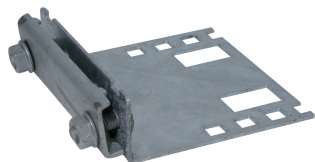


# RayClic Standing Seam Mounting Bracket

nVent RAYCHEM RAYCLIC-SB-GM-METAL Rayclic mounting bracket for fixing to a seamed metal roof.



## SPECIFICATIONS

Table 1/2

Catalog Number	Item Name	Material	Finish	Thickness	Length	Width
1244-013853	RAYCLIC-SB-GM-METAL	Steel	Hot-Dip Galvanized	2 mm	120 mm	130 mm

Table 2/2

Catalog Number	Item Name	Height
1244-013853	RAYCLIC-SB-GM-METAL	42 mm

## WARNING

nVent products shall be installed and used only as indicated in nVent's product instruction sheets and training materials. Instruction sheets are available at [www.nvent.com](http://www.nvent.com) and from your nVent customer service representative. Improper installation, misuse, misapplication or other failure to completely follow nVent's instructions and warnings may cause product malfunction, property damage, serious bodily injury and death and/or void your warranty.

**North America**

Tel +1.800.545.6258

Fax +1.800.527.5703

[thermal.info@nvent.com](mailto:thermal.info@nvent.com)

**Europe, Middle East,  
Africa**

Tel +32.16.213.511

Fax +32.16.213.604

[thermal.info@nvent.com](mailto:thermal.info@nvent.com)

**Asia Pacific**

Tel +86.21.2412.1688

Fax +86.21.5426.3167

[cn.thermal.info@nvent.com](mailto:cn.thermal.info@nvent.com)

**Latin America**

Tel +1.713.868.4800

Fax +1.713.868.2333

[thermal.info@nvent.com](mailto:thermal.info@nvent.com)

Our powerful portfolio of brands:

**RAYCHEM   PYROTENAX   TRACER   NUHEAT**