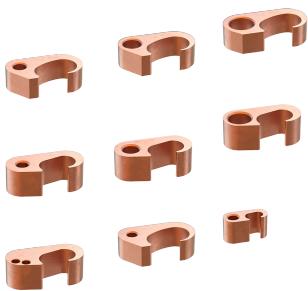


# nVent ERICO PermaGround Compression Connector, Figure 6-Crimps



The nVent ERICO PermaGround Compression Connectors, Figure 6-Crimps, are designed to join two grounding conductors or connect a grounding conductor to a grounding rod within a grounding system using a compression tool. Made from high-strength conductive copper, they provide a low-resistance connection that prevents corrosion, ensuring durability. With their range-taking capabilities, the Figure 6-Crimps are compatible with various conductors and ground rods. To guard against oxidation, the inner surface of the Figure 6-Crimps is prefilled with an oxide inhibitor that creates an airtight seal around the conductors once the connection is made. This feature makes the Figure 6-Crimp connector suitable for a wide range of applications.

## FEATURES

Made from high-strength conductive copper for durability and maximum conductivity

Prefilled with an oxide inhibitor to prevent oxidation and ensure a long-lasting connection

Compatible with various conductors and ground rods, offering versatile application options

Can be installed in all weather conditions, making it suitable for diverse environments

## SPECIFICATIONS

Table 1/2

Catalog Number	Material	Conductor Type	Main/Run Conductor Range	Tap Conductor Range	Main Ground Rod	Connection Type
GGC-1-MM	Copper	Solid, Stranded	35 - 16 mm <sup>2</sup>	35 - 16 mm <sup>2</sup>		Conductor to Conductor
GGC-4-MM	Copper	Solid, Stranded	120 - 50 mm <sup>2</sup>	120 - 95 mm <sup>2</sup>	1/2" - 5/8"	Conductor to Conductor, Conductor to Ground Rod
GGC-3-MM	Copper	Solid, Stranded	120 - 50 mm <sup>2</sup>	70 - 50 mm <sup>2</sup>	1/2" - 5/8"	Conductor to Conductor, Conductor to Ground Rod

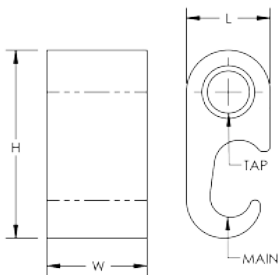
CatalogNumber	Material	ConductorType	Main/Run Conductor Range	Tap Conductor Range	Main Ground Rod	Connection Type
GGC-2-MM	Copper	Solid, Stranded	120 - 50 mm <sup>2</sup>	35 - 25 mm <sup>2</sup>	1/2" - 5/8"	Conductor to Conductor, Conductor to Ground Rod
GGC-9-MM	Copper	Solid, Stranded	120 - 50 mm <sup>2</sup>	16 - 16 mm <sup>2</sup>	1/2" - 5/8"	Conductor to Conductor, Conductor to Ground Rod
GGC-7-MM	Copper	Solid, Stranded	240 - 120 mm <sup>2</sup>	120 - 95 mm <sup>2</sup>	5/8" - 3/4"	Conductor to Conductor, Conductor to Ground Rod
GGC-6-MM	Copper	Solid, Stranded	240 - 120 mm <sup>2</sup>	70 - 50 mm <sup>2</sup>	5/8" - 3/4"	Conductor to Conductor, Conductor to Ground Rod
GGC-5-MM	Copper	Solid, Stranded	240 - 120 mm <sup>2</sup>	35 - 25 mm <sup>2</sup>	5/8" - 3/4"	Conductor to Conductor, Conductor to Ground Rod
GGC-8-MM	Copper	Solid, Stranded	240 - 120 mm <sup>2</sup>	240 - 185 mm <sup>2</sup>	5/8" - 3/4"	Conductor to Conductor, Conductor to Ground Rod

Table 2/2

Catalog Number	Die Index	Length (L)	Width (W)	Height (H)	Unit Weight	Direct Burial
GGC-1-MM	0	15.88mm	19.05 mm	35.56 mm	0.054 kg	Yes
GGC-4-MM	997	23.8mm	19.05 mm	53.3 mm	0.1 kg	Yes
GGC-3-MM	997	23.8mm	19.05 mm	53.3 mm	0.116 kg	Yes
GGC-2-MM	997	23.8mm	19.05 mm	53.3 mm	0.124 kg	Yes
GGC-9-MM	997	23.8mm	19.05 mm	53.29 mm	0.124 kg	Yes
GGC-7-MM	998	34.67mm	19.05 mm	65.15 mm	0.17 kg	Yes

CatalogNumber	Die Index	Length (L)	Width (W)	Height (H)	Unit Weight	Direct Burial
GGC-6-MM	998	34.67mm	19.05 mm	65.15 mm	0.187 kg	Yes
GGC-5-MM	998	34.67mm	19.05 mm	65.15 mm	0.194 kg	Yes
GGC-8-MM	1011	34.67mm	19.05 mm	73.41 mm	0.196 kg	Yes

## DIAGRAMS



## WARNING

nVent products shall be installed and used only as indicated in nVent's product instruction sheets and training materials. Instruction sheets are available at [www.nvent.com](http://www.nvent.com) and from your nVent customer service representative. Improper installation, misuse, misapplication or other failure to completely follow nVent's instructions and warnings may cause product malfunction, property damage, serious bodily injury and death and/or void your warranty.

### North America

+1.800.753.9221  
Option 1 – Customer Care  
Option 2 – Technical  
Support

### Europe

Netherlands:  
+31 800-0200135  
France:  
+33 800 901 793

### Europe

Germany:  
800 1890272  
Other Countries:  
+31 13 5835404

### APAC

Shanghai:  
+ 86 21 2412 1618/19  
Sydney:  
+61 2 9751 8500



Our powerful portfolio of brands:

**CADDY ERICO HOFFMAN ILSCO SCHROFF TRACHTE**