

nVent ERIFLEX Flexbus Firestop Block FBB

Data Solutions



CERTIFICATIONS



FEATURES

Highly-elastic moldable block

Easy access for difficult-to-reach openings

Age, smoke and damp resistant

Re-enterable and repairable

Excellent adhesion

No backing material required

F-rating / E-rating up to 2 hours

T-rating / I-rating up to 2 hours

SPECIFICATIONS

Width (W): 450mm max

Height (H): 500mm max

Color: Red; Brown

Table 1/2

Catalog Number	Article Number	A	B	C	Complies With	Density
FLEXFIREBLOC KUL	508154	200mm	130mm	60mm	ASTM E 84 (UL 723), ASTM E 814 (UL 1479)	
FLEXFIREBLOC K	508151	200mm	144mm	60mm	EN 13501-1, EN 1366-3	240 – 300

Table 2/2

Catalog Number	Article Number	Flammability Rating	Unit Weight	Certifications
FLEXFIREBLOCKUL	508154		0.56kg	cULus Classified, CE, RoHS, ESTI ERIFLEX Flexbus
FLEXFIREBLOCK	508151	DIN 4102 (B2)	0.56kg	FBS-EN, RoHS, ESTI ERIFLEX Flexbus, CE

ADDITIONAL PRODUCT DETAILS

The thickness of the penetration seal has to be minimum 200mm, depending on the fire resistance classification (see Annex J-1 of the ETA) in order to obtain EI120 fire-resistance.

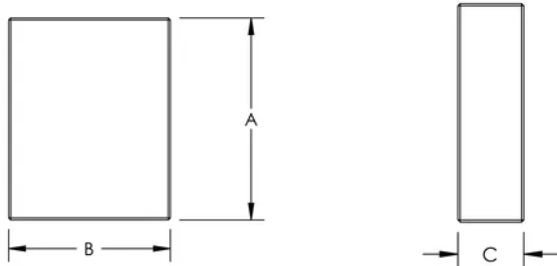
If 200mm is not possible, the FIB (intumescent wrap) needs to be used around the Flexbus Conductors and with 150mm width on both sides in order to reach EI120 fire resistance.

The width and height is referring to the maximum opening size of the penetration seal.

The total cross section of the installation (including insulation and conductor) must not be more than 60% of the opening size of the penetration seal.

The first support for the Flexbus Conductor has to be at a maximum 200mm measured from the surface of the penetration seal.

DIAGRAMS



WARNING

nVent products shall be installed and used only as indicated in nVent's product instruction sheets and training materials. Instruction sheets are available at www.nvent.com and from your nVent customer service representative. Improper installation, misuse, misapplication or other failure to completely follow nVent's instructions and warnings may cause product malfunction, property damage, serious bodily injury and death and/or void your warranty.



Our powerful portfolio of brands:

CADDY ERICO HOFFMAN ILSCO SCHROFF TRACHTE