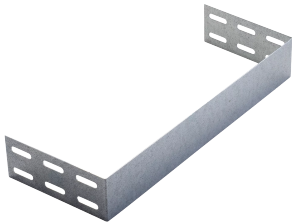


WBT Performance Cable Tray Blind End



The nVent CADDY WBT Performance Cable Tray Blind End is designed to enhance cable management by creating a simple solution for ending a section of cable tray. Ideal for both small and large trays, the WBT Performance Cable Tray Blind End allows contractors to cleanly and efficiently manage the ends of a cable run, especially those with high fill ratios.

With a fully removable and reusable design, quickly attach to the cable tray with the use of the nVent CADDY WBT Performance Cable Tray Splice Kit and enjoy endless configuration options. The robust material helps prevent tray walls from fanning out and is engineered for systems that may require future expansion.

FEATURES

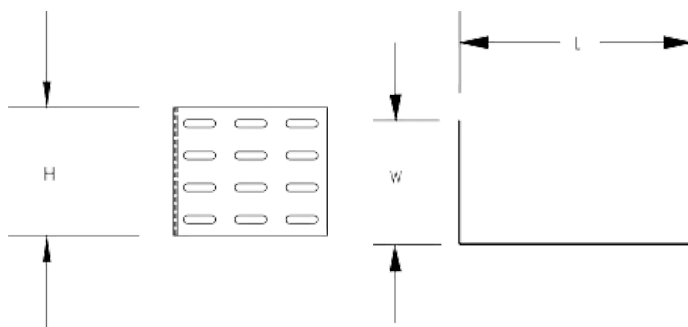
Designed to be used with the nVent CADDY WBT Performance Cable Tray Splice Kit

Multiple color options to coordinate with cable tray selection

Builds stability and creates an aesthetically clean end of tray

SPECIFICATIONS

DIAGRAMS



WARNING

nVent products shall be installed and used only as indicated in nVent's product instruction sheets and training materials. Instruction sheets are available at www.nvent.com and from your nVent customer service representative. Improper installation, misuse, misapplication or other failure to completely follow nVent's instructions and warnings may cause product malfunction, property damage, serious bodily injury and death and/or void your warranty.

North America

+1.800.753.9221

Option 1 – Customer Care

Option 2 – Technical

Support

Europe

Netherlands:

+31 800-0200135

France:

+33 800 901 793

Europe

Germany:

800 1890272

Other Countries:

+31 13 5835404

APAC

Shanghai:

+ 86 21 2412 1618/19

Sydney:

+61 2 9751 8500



Our powerful portfolio of brands:

CADDY

ERICO

HOFFMAN

ILSCO

SCHROFF

TRACHTE

