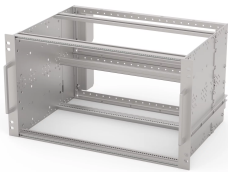


# EuropacPRO 19" Subrack Kit for Railway, Retrofit Shielding, SNCF

## Power Utilities

Subrack for Railway applications, conform to SNCF Standard, non-shielded versions.



### CERTIFICATIONS



### FEATURES

SNCF listed, EuropacPRO-fer, tested to NF F 61-005 and NF F 60-002

The 19" bracket is firmly fixed to the side panel (tox-cold welded) and is especially suited for high mechanical stresses (vibration resistance)

Lateral support bars to NFF standard facilitate insertion of subrack into the (cabinet) frame. The double 19" screwing position adds to additionally safety (NFF standard)

IP 20, in accordance with IEC 60529

Modifications such as cutouts, different finishes or dimensions available

Supplied as space-saving flat-pack

Aluminum construction

Horizontal rail type "Heavy"

## SPECIFICATIONS

Table 1/3

Catalog Number	Rack Height	Rack Width	Depth	Package Quantity	For Mounting	Board Depth
21500-070	6 U	36 HP	320 mm	1	Backplane	220 mm
21500-067	3 U	36 HP	320 mm	1	Backplane	220 mm
21500-029	3 U	84 HP	320 mm	1	Backplane	220 mm
21500-027	6 U	84 HP	320 mm	1	Backplane	220 mm

Table 2/3

Catalog Number	Gasket Type	Shock and Vibration Tolerance	Handle Included	Mounting	Complies With	EMC Shielding
21500-070	Textile	5 g (force)	Yes	Rack	IEC 60297-3-103, SNCF NFF 61005, SNCF NFF 60002	No
21500-067	Textile	5 g (force)	Yes	Rack	IEC 60297-3-103, SNCF NFF 61005, SNCF NFF 60002	No
21500-029	Textile	5 g (force)	Yes	Rack	IEC 60297-3-103, SNCF NFF 61005, SNCF NFF 60002	No
21500-027	Textile	5 g (force)	Yes	Rack	IEC 60297-3-103, SNCF NFF 61005, SNCF NFF 60002	No

Table 3/3

Catalog Number	Product Type	Static Load	Certifications
21500-070	Subrack/Chassis	15 kgf	RoHS
21500-067	Subrack/Chassis	15 kgf	RoHS
21500-029	Subrack/Chassis	15 kgf	RoHS, SNCF

Catalog Number	Product Type	Static Load	Certifications
21500-027	Subrack/Chassis	15 kgf	RoHS, SNCF

## ADDITIONAL PRODUCT DETAILS

Test reports are available online.

Fer = ferroviaire = French Railways, 1 T = 4 HP = 20.32 mm Receptacle/mounting frame for subracks, stainless steel, 9 T or 21 T on request.

Receptacle/mounting frame for subracks, stainless steel, 9 T or 21 T on request.

Individual configuration: broad range of variants in height, width and depth; guide rails for a wide variety of applications; interior options; accessories and mounting material.

## WARNING

nVent products shall be installed and used only as indicated in nVent's product instruction sheets and training materials. Instruction sheets are available at [www.nvent.com](http://www.nvent.com) and from your nVent customer service representative. Improper installation, misuse, misapplication or other failure to completely follow nVent's instructions and warnings may cause product malfunction, property damage, serious bodily injury and death and/or void your warranty.



Our powerful portfolio of brands:

**CADDY ERICO HOFFMAN ILSCO SCHROFF TRACHTE**