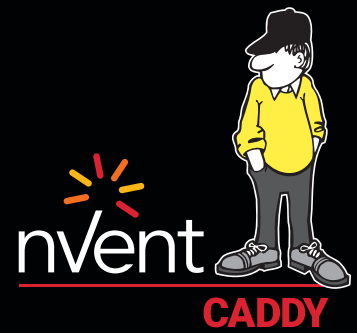


nVent CADDY

New Product Introductions

Spring 2023



CONNECT AND PROTECT

Our nVent CADDY team of experts take time to create solutions with the customer and their challenges in mind—as well as building code requirements, difficult project challenges, and trends in the current market. Hours of research, product development and engineering go into nVent CADDY products to help solve for several barriers in the electrical and in-wall markets. Our new product additions and improved offerings are the culmination of ongoing feedback provided by installation contractors. The results are a testament to our dedication to overall project cost savings, quality and innovation.

Benefits of our new and improved nVent CADDY solutions include:



Tool-free Installation



Labor Savings



Fast and Easy Installation



Designed for Electrical



Time and Cost Savings



Designed for Data/Low Voltage

OPEN BACK BOX (OBB4)

Compliant In:  

- Detachable back plate for quick access to wiring without removing mud ring
- Open-back methodology provides versatility and installation efficiency
- Rigid support prevents kickback into stud wall
- Multiple knockouts for installing raceways
- Ideal for full prefab projects
- Application-specific sizing options available
- Designed for U.S. plaster ring and cover screw locations



Compatible With:



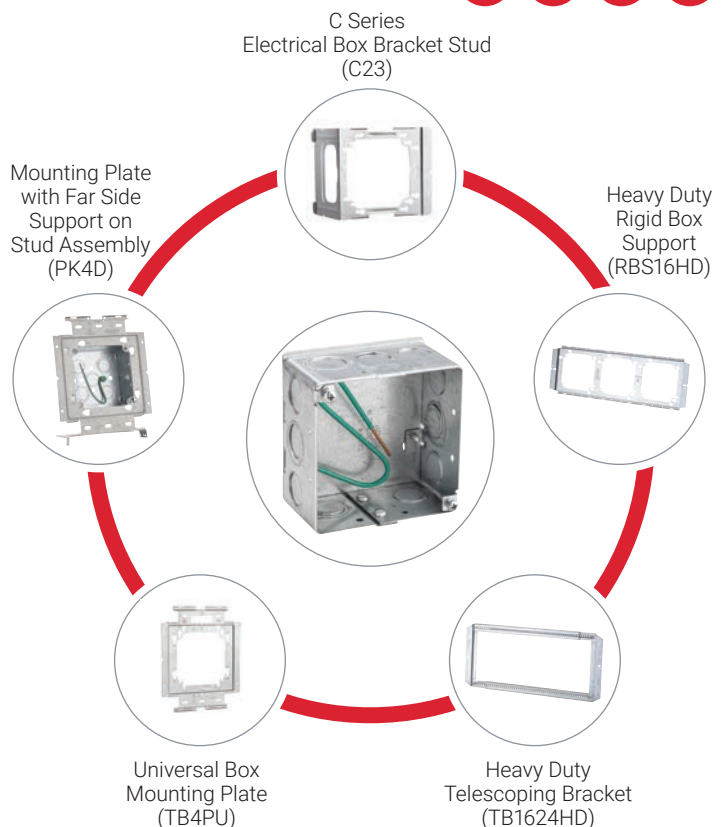
All-in-One
Electrical
Assemblies
(A1SF0G)



Adjustable
Mud Ring
(AMR1224SG)



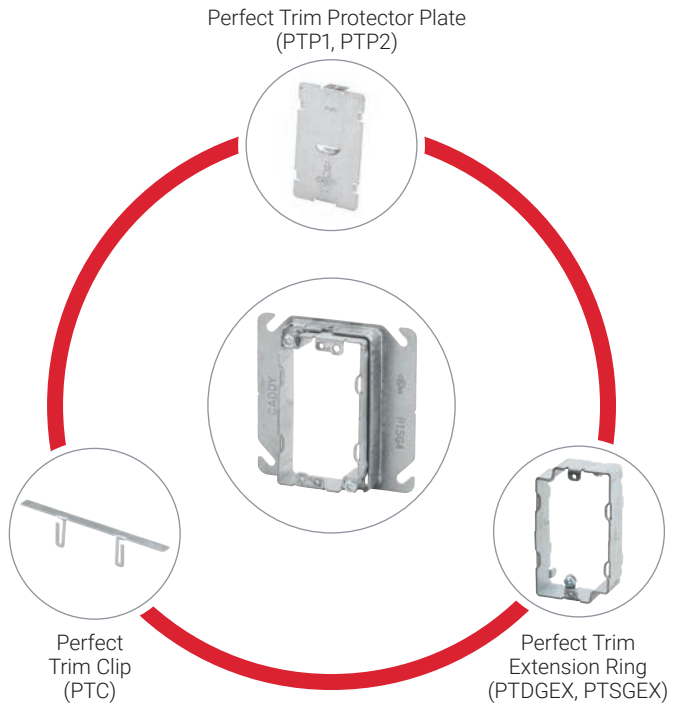
Perfect Trim
Adjustable Mud
Ring (PTSG4)



PERFECT TRIM ADJUSTABLE MUD RING (PTDG4, PTDG411, PTSG4, PTSG411)

Compliant In:  

- Two piece adjustable mud ring accommodates various thicknesses of drywall
- Inner ring is removable which allows devices to be installed after drywall installation
- Can be used with the following (sold separately)
 - nVent CADDY Perfect Trim Protector Plate that snaps into outer ring after inner ring has been removed to prevent damage during drywall installation
 - nVent CADDY Perfect Trim Clip that snaps into inner ring to hold box bracket flush and rigid to drywall
 - nVent CADDY Perfect Trim Extension Ring that attaches to inner ring for additional depths up to 2¼"
- Designed for U.S. plaster ring and cover screw locations



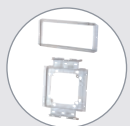
Compatible With:



Heavy Duty Telescoping Bracket Between Stud Assembly (TBP4D)



Open Back Box (OBB4)



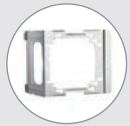
TB1624HD with TB45P, TB45PK, TB4PU, TB4PKU



Snap to Stud Electrical Box Bracket (STS2346)



RBS16HD and RBS24HD



C Series Electrical Box Bracket to Stud (C23, C4, C6)



PTDG4



PTDG411



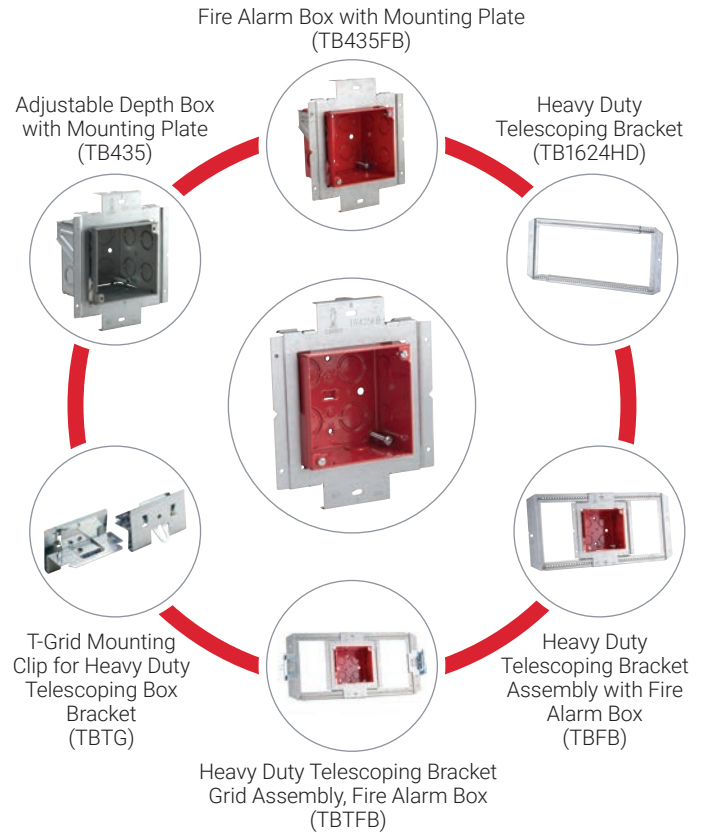
PTSG4



PTSG411

FIRE ALARM BOX WITH MOUNTING PLATE (TB425FB)

- Used for mounting fire alarm devices and strobes
- Snap-on installation to Heavy Duty Telescoping Bracket allows for easy positioning along bracket
- Can also be mounted directly to metal or wood studs
- For use with TB1624HD and TBTG (sold separately) for overhead T-Grid application
- Easily adjusts from ½" to 1¼" for different depth wall and ceiling applications
- Screws inside box allow for adjustment after drywall or ceiling tile installation, providing confidence to adapt to any situation
- Includes multiple knockouts on each side of the box
- Design provides built in far side support
- Powder coated inside and outside of box
- Includes depth stamps marked directly on the product for easy positioning
- Drop-wire attachment point



REINFORCED CONDUIT STUB-DOWN (RSD075R)

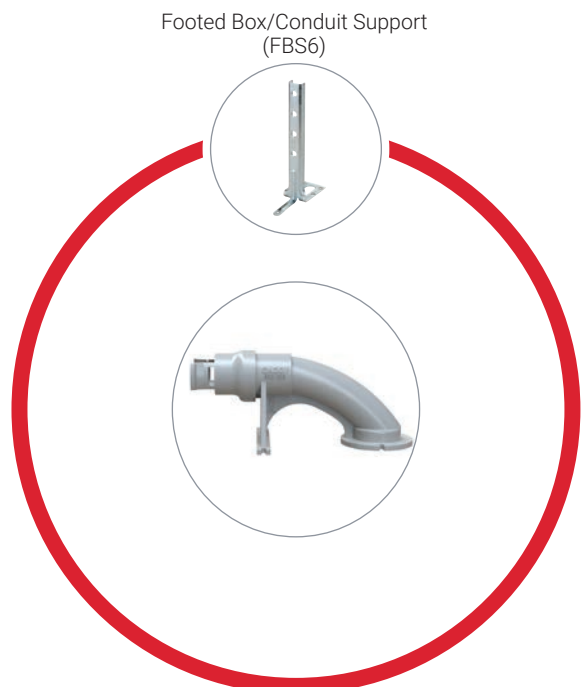
- Integrated reinforcing stand—resists up to 200 lbs of force
- Generous radius for ease of wire pull—50% less force required
- Threaded opening to accommodate standard fittings
- No fish tape hang ups



Application Shot:



Reinforced Conduit Stub-Down Application



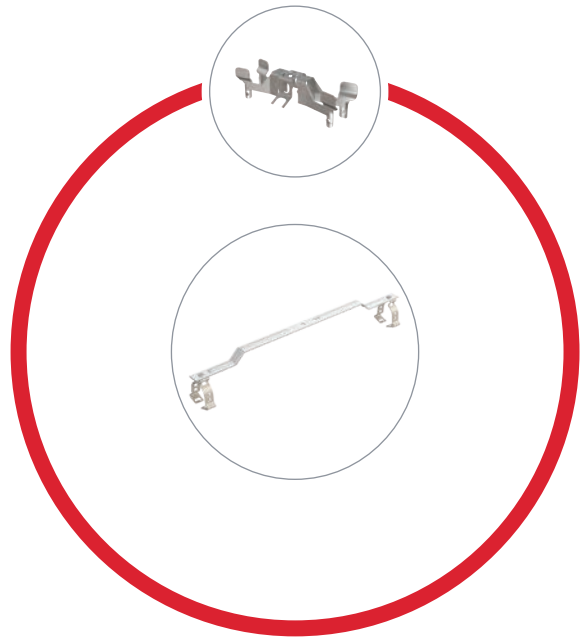
B18 COMBINATION BOX/CONDUIT HANGER (812MB18XA, 16MB18XA)

Compliant In: 

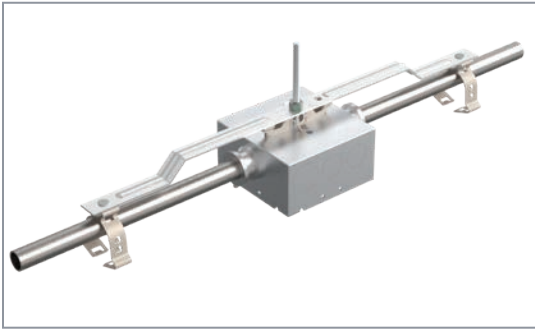
- One assembly provides support for horizontal electrical box and/or conduit from threaded rod
- Eliminates need for offset bending conduit
- NEC® and CEC compliant
- Provides independent first means of support for conduit and/or MC/AC cable
- Ideal means of support when used with the nVent CADDY 512X Electrical Box Mounting Clip with offset



Electrical Box Mounting Clip (512X)



Application Shot:



B18 Combination Box/Conduit Hanger Application

COMING SOON

MC TRAPEZE (MCS100TX4)



- Shot fire flange for direct attachment to ceiling/deck
- Accommodates ¼" threaded rod trapeze drops
- Properly spaces MC/AC cable to help eliminate bundling and NEC® and CEC derating issues
- Up to 50% installation time savings over traditional methods

Learn more about these products and our additional nVent CADDY solutions for In-Wall: nVent.com/CADDY/in-wall-solutions and Data and Networking: nVent.com/CADDY/solutions/datacom-cable-management/dns.



Our powerful portfolio of brands:

CADDY ERICO HOFFMAN RAYCHEM SCHROFF TRACER