

# T-Series Vertical Sleeve



## FEATURES

Designed to connect vertical reinforcing bars and angular reinforcing bars greater than 45 degrees

Used to splice the same diameter bars

Works with saw cut, flame cut and sheared bars

Can be visually inspected after installation

Available with extended sleeve lengths

## SPECIFICATIONS

**Finish:** Plain

**Material:** Steel

**100% U.S. Domestic Content:** Yes

Table 1/2

Catalog Number	Sleeve	Rebar Size, Metric	Rebar Size, US	Rebar Size, Canada	Diameter 1 (Ø1)	Diameter 2 (Ø2)
RBT5101A	Standard Length	16 mm	#5	15M	35 mm	22 mm
RBT6101A	Standard Length	20 mm	#6	20M	38 mm	25 mm
RBT51012A	Extended Length	16 mm	#5	15M	35 mm	22 mm
RBT7101A	Standard Length	22 mm	#7		41 mm	29 mm

<b>CatalogNumber</b>	<b>Sleeve</b>	<b>Rebar Size, Metric</b>	<b>Rebar Size, US</b>	<b>Rebar Size, Canada</b>	<b>Diameter 1(Ø1)</b>	<b>Diameter 2(Ø2)</b>
RBT61011A	Extended Length	20 mm	#6	20M	38 mm	25 mm
RBT61012A	Extended Length	20 mm	#6	20M	38 mm	25 mm
RBT8101A	Standard Length	25 mm	#8	25M	48 mm	32 mm
RBT9101A	Standard Length	28 mm	#9	30M	54 mm	38 mm
RBT81011A	Extended Length	25 mm	#8	25M	48 mm	32 mm
RBT1091A	Standard Length	32 mm	#10		57 mm	41 mm
RBT91011A	Extended Length	28 mm	#9	30M	54 mm	38 mm
RBT91012A	Extended Length	28 mm	#9	30M	54 mm	38 mm
RBT10911A	Extended Length	32 mm	#10		57 mm	41 mm
RBT111011A	Extended Length	36 mm	#11	35M	64 mm	44 mm
RBT111012A	Extended Length	36 mm	#11	35M	64 mm	44 mm
RBT11101A	Standard Length	36 mm	#11	35M	64 mm	44 mm
RBT121018A	Extended Length	38 mm	#12		70 mm	48 mm
RBT12917A	Standard Length	38 mm	#12		70 mm	48 mm
RBW4117A	Standard Length	40 mm			73 mm	51 mm
RBT141011A	Extended Length	43 mm	#14	45M	76 mm	54 mm
RBT141012A	Extended Length	43 mm	#14	45M	76 mm	54 mm
RBT14101A	Standard Length	43 mm	#14	45M	76 mm	54 mm

CatalogNumber	Sleeve	Rebar Size, Metric	Rebar Size, US	Rebar Size, Canada	Diameter 1(Ø1)	Diameter 2(Ø2)
RBW45510A	Extended Length	50 mm			60 mm	60 mm
RBW4558A	Standard Length	50 mm			86 mm	60 mm
RBT18911A	Extended Length	57 mm	#18	55M	95 mm	67 mm
RBT1891A	Standard Length	57 mm	#18	55M	95 mm	67 mm

Table 2/2

Catalog Number	Length 1 (L1)	Length 2 (L2)	Unit Weight
RBT5101A	102 mm	51 mm	0.45 kg
RBT6101A	127 mm	64 mm	0.63 kg
RBT51012A	152 mm	76 mm	0.68 kg
RBT7101A	127 mm	64 mm	0.69 kg
RBT61011A	152 mm	76 mm	0.76 kg
RBT61012A	178 mm	89 mm	0.88 kg
RBT8101A	127 mm	64 mm	0.98 kg
RBT9101A	127 mm	64 mm	1.14 kg
RBT81011A	152 mm	76 mm	1.38 kg
RBT1091A	140 mm	70 mm	1.34 kg
RBT91011A	152 mm	76 mm	1.37 kg
RBT91012A	178 mm	89 mm	1.6 kg
RBT10911A	165 mm	83 mm	1.59 kg

Catalog Number	Length 1 (L1)	Length 2 (L2)	Unit Weight
RBT111011A	178 mm	89 mm	2.25 kg
RBT111012A	203 mm	102 mm	2.57 kg
RBT11101A	152 mm	76 mm	1.93 kg
RBT121018A	203 mm	102 mm	3.27 kg
RBT12917A	178 mm	89 mm	2.86 kg
RBW4117A	178 mm	89 mm	2.99 kg
RBT141011A	203 mm	102 mm	3.62 kg
RBT141012A	229 mm	114 mm	4.07 kg
RBT14101A	178 mm	89 mm	3.17 kg
RBW45510A	254 mm	127 mm	5.81 kg
RBW4558A	203 mm	102 mm	4.63 kg
RBT18911A	254 mm	127 mm	7.24 kg
RBT1891A	229 mm	114 mm	6.51 kg

**Designed to Meet:** AASHTO;ABNT NBR 8548:1984;ACI 318 Type 1 (125% Specified Yield);ACI 318 Type 2 (Specified Tensile);ACI 349;ACI 359;AS3600

## ADDITIONAL PRODUCT DETAILS

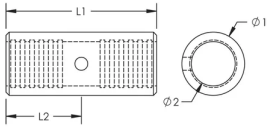
---

Prior to installation, please read and understand all of the detailed instructions and safety notices provided in the nVent LENTON Cadweld Rebar Splicing System Instruction Manual.

Sizes not shown may be available by special order. Contact your nVent LENTON representative for more information.

## DIAGRAMS

---



## WARNING

---

nVent products shall be installed and used only as indicated in nVent's product instruction sheets and training materials. Instruction sheets are available at [www.nvent.com](http://www.nvent.com) and from your nVent customer service representative. Improper installation, misuse, misapplication or other failure to completely follow nVent's instructions and warnings may cause product malfunction, property damage, serious bodily injury and death and/or void your warranty.

### North America

+1.800.753.9221

Option 1 – Customer Care

Option 2 – Technical

Support

### Europe

Netherlands:

+31 800-0200135

France:

+33 800 901 793

### Europe

Germany:

800 1890272

Other Countries:

+31 13 5835404

### APAC

Shanghai:

+ 86 21 2412 1618/19

Sydney:

+61 2 9751 8500



Our powerful portfolio of brands:

**CADDY**

**ERICO**

**HOFFMAN**

**ILSCO**

**SCHROFF**

**TRACHTE**