

T-Series Horizontal Transition Filler Material Kit



T-Series horizontal filler material kits contain the following: Filler material, two horizontal packings, pouring basin ceramic guide tube and pouring basin crucible ceramic and disk. All filler material kits contain one-time use components that are sized to a specific sleeve, pouring basin and pouring basin crucible combination. Ordering filler material kits simplifies ordering, reduces order errors and helps ensure proper sizing of components.

FEATURES

Simplifies ordering

Used to splice different diameter bars

All components are for one-time use

SPECIFICATIONS

Table 1/1

Catalog Number	Rebar Size, Metric	Rebar Size, US	Rebar Size, Canada
RBT811101HB	36 mm, 25 mm	#11, #8	35M, 25M
RBT89101HB	28 mm, 25 mm	#9, #8	30M, 25M
RBT1118101HB	57 mm, 36 mm	#18, #11	55M, 35M
RBT1011101HB	36 mm, 32 mm	#11, #10	

ADDITIONAL PRODUCT DETAILS

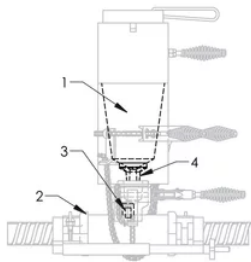
Prior to installation, please read and understand all of the detailed instructions and safety notices provided in the nVent LENTON Cadweld Rebar Splicing System instruction manual.

Filler material kits are a component in splice kits. Care should be taken to avoid duplication of orders.

Components can also be purchased separately: (1) Filler Material, (2) Packing, (3) Pouring Basin Ceramic Guide Tube, and (4) Pouring Basin Ceramic Insert and Disk.

Filler Material Kit Components				
Filler Material Kit	Filler Material	Packing (2 Required)	Pouring Basin Ceramic Insert and Disk	Pouring Basin Ceramic Guide Tube
RBT89101HB	RBF90	RBS354711	RBS5037	RBS5038
RBT811101HB	RBF105	RBS354714	RBS5037	RBS5038
RBT1011101HB	RBF125	RBS354712	RBS5037	RBS5038
RBT1118101HB	RBF240	RBS354712	RBS5037	RBS5039

DIAGRAMS



WARNING

nVent products shall be installed and used only as indicated in nVent's product instruction sheets and training materials. Instruction sheets are available at www.nvent.com and from your nVent customer service representative. Improper installation, misuse, misapplication or other failure to completely follow nVent's instructions and warnings may cause product malfunction, property damage, serious bodily injury and death and/or void your warranty.

North America

+1.800.753.9221
Option 1 – Customer Care
Option 2 – Technical
Support

Europe

Netherlands:
+31 800-0200135
France:
+33 800 901 793

Europe

Germany:
800 1890272
Other Countries:
+31 13 5835404

APAC

Shanghai:
+ 86 21 2412 1618/19
Sydney:
+61 2 9751 8500



Our powerful portfolio of brands:

CADDY ERICO HOFFMAN ILSCO SCHROFF TRACHTE