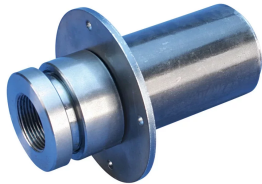


P8 Position Coupler with Form Saving Plate



Used in segmental pour and closure pour applications. Permanent form saving plates allow easy attachment to form work, eliminating costly damage to the forms.

FEATURES

Designed to splice the same diameter bars

Designed to splice two curved, bent or straight bars, when neither bar can be rotated and where the ongoing bar is NOT free to move in its axial direction

Adjustability in the female end of the coupler allows the coupler to extend out to meet the taper-threaded reinforcing bar

SPECIFICATIONS

Table 1/3

Catalog Number	Material	Finish	100% U.S. Domestic Content	Rebar Size, Metric	Rebar Size, US	Diameter 1 (Ø1)
EL32S1P80572	Steel	Plain	Yes	32 mm	#10	65 mm

Table 2/3

Catalog Number	Diameter 2 (Ø2)	Length 1 (L1)	Length 2 (L2)	Bar Depth (BD)	Bar Gap 1 (BG1)	Bar Gap 2 (BG2)
EL32S1P80572	114 mm	186 mm	247 mm	40mm	105mm	166mm

Table 3/3

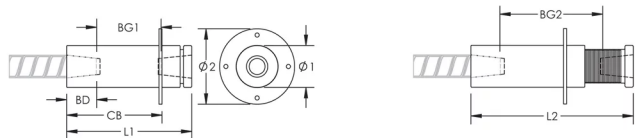
Catalog Number	Coupler Body (CB)	Unit Weight
EL32S1P80572	145mm	4.21 kg

Designed to AASHTO;ABNT NBR 8548:1984;ACI 318 Type 1 (125% Specified Yield);ACI 318 Type 2 (Specified
Meet: Tensile);ACI 349;ACI 359;AS3600

ADDITIONAL PRODUCT DETAILS

Bar dimensions and weights listed may vary by region. Coupler sizes not shown may be available by special order. Contact your nVent LENTON representative for more information.

DIAGRAMS



WARNING

nVent products shall be installed and used only as indicated in nVent's product instruction sheets and training materials. Instruction sheets are available at www.nvent.com and from your nVent customer service representative. Improper installation, misuse, misapplication or other failure to completely follow nVent's instructions and warnings may cause product malfunction, property damage, serious bodily injury and death and/or void your warranty.

North America

+1.800.753.9221
Option 1 – Customer Care
Option 2 – Technical
Support

Europe

Netherlands:
+31 800-0200135
France:
+33 800 901 793

Europe

Germany:
800 1890272
Other Countries:
+31 13 5835404

APAC

Shanghai:
+ 86 21 2412 1618/19
Sydney:
+61 2 9751 8500



Our powerful portfolio of brands:

CADDY ERICO HOFFMAN ILSCO SCHROFF TRACHTE