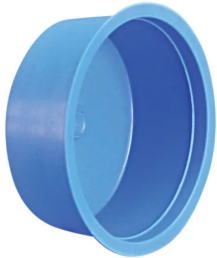


# Inlet/Outlet Plug



Inlet and outlet plugs are installed into the grout tubes of the coupler in order to keep dirt, water and concrete slurry out of the coupler during the concrete pour, transportation and installation.

## FEATURES

Designed to fit inside schedule 40 PVC pipe

Easy to install and remove

## SPECIFICATIONS

**Color:** Blue

**Material:** Polyethylene

Table 1/1

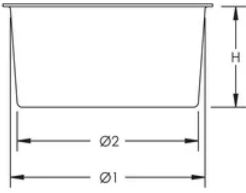
| Catalog Number | Type   | Height (H) | Diameter 1 (Ø1) | Diameter 2 (Ø2) |
|----------------|--------|------------|-----------------|-----------------|
| LK502          | Outlet | 13 mm      | 16 mm           | 14 mm           |
| LK501          | Inlet  | 16 mm      | 22 mm           | 19 mm           |

## ADDITIONAL PRODUCT DETAILS

Prior to installation, please read and understand the detailed instructions and safety notices provided in the nVent LENTON Interlok Instruction Manual.

## DIAGRAMS

---



## WARNING

---

nVent products shall be installed and used only as indicated in nVent's product instruction sheets and training materials. Instruction sheets are available at [www.nvent.com](http://www.nvent.com) and from your nVent customer service representative. Improper installation, misuse, misapplication or other failure to completely follow nVent's instructions and warnings may cause product malfunction, property damage, serious bodily injury and death and/or void your warranty.

### North America

+1.800.753.9221

Option 1 – Customer Care

Option 2 – Technical

Support

### Europe

Netherlands:

+31 800-0200135

France:

+33 800 901 793

### Europe

Germany:

800 1890272

Other Countries:

+31 13 5835404

### APAC

Shanghai:

+ 86 21 2412 1618/19

Sydney:

+61 2 9751 8500



Our powerful portfolio of brands:

**CADDY**

**ERICO**

**HOFFMAN**

**ILSCO**

**SCHROFF**

**TRACHTE**