

A2 Standard Transition Coupler, Plain



CERTIFICATIONS



FEATURES

Designed to splice different diameter bars where the second bar can be rotated and is not restricted in its axial direction

Slim design maintains concrete cover

Installs quickly and easily

SPECIFICATIONS

Finish: Plain

Material: Steel

Table 1/2

Catalog Number	Rebar Size, Metric	Rebar Size, US	Rebar Size, Canada	Diameter (Ø)	Length (L)	Bar Depth 1 (BD1)
EL2520A2N	25 mm, 20 mm	#8, #6	25M, 20M	36 mm	89mm	34mm
EL2825A2N	28 mm, 25 mm	#9, #8	30M, 25M	40 mm	97mm	38mm
EL3228A2N	32 mm, 28 mm	#10, #9		45 mm	105mm	40mm

CatalogNumber	Rebar Size, Metric	Rebar Size, US	Rebar Size, Canada	Diameter (Ø)	Length (L)	Bar Depth 1 (BD1)
EL3225A2N	32 mm, 25 mm	#10, #8		45 mm	101mm	40mm
EL4025A2N	40 mm, 25 mm			55 mm	117mm	55mm
EL4032A2N	40 mm, 32 mm			55 mm	122mm	55mm
EL43T36A2N	43 mm, 36 mm	#14, #11	45M, 35M	60 mm	131mm	56mm

Table 2/2

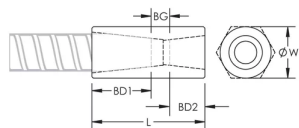
Catalog Number	Bar Depth 2 (BD2)	Bar Gap (BG)	Unit Weight	Package Quantity	Certifications
EL2520A2N	28mm	27mm	0.51 kg	50	DCL, CARES
EL2825A2N	34mm	25mm	0.66 kg	46	IAPMO®-UES, LA City Approval
EL3228A2N	38mm	27mm	0.87 kg	16	IAPMO®-UES, LA City Approval
EL3225A2N	34mm	27mm	0.88 kg	16	DCL, CARES
EL4025A2N	34mm	27mm	1.52 kg	12	CARES
EL4032A2N	40mm	27mm	1.52 kg	12	DCL, CARES
EL43T36A2N	43mm	32mm	1.98 kg	12	IAPMO®-UES, LA City Approval

Designed to Meet: AASHTO;ABNT NBR 8548:1984;ACI 318 Type 1 (125% Specified Yield);ACI 318 Type 2 (Specified Tensile);ACI 349;ACI 359;AS3600

ADDITIONAL PRODUCT DETAILS

Bar dimensions and weights listed may vary by region. Coupler sizes not shown may be available by special order. Contact your nVent LENTON representative for more information.

DIAGRAMS



WARNING

nVent products shall be installed and used only as indicated in nVent's product instruction sheets and training materials. Instruction sheets are available at www.nvent.com and from your nVent customer service representative. Improper installation, misuse, misapplication or other failure to completely follow nVent's instructions and warnings may cause product malfunction, property damage, serious bodily injury and death and/or void your warranty.

North America

+1.800.753.9221
Option 1 – Customer Care
Option 2 – Technical
Support

Europe

Netherlands:
+31 800-0200135
France:
+33 800 901 793

Europe

Germany:
800 1890272
Other Countries:
+31 13 5835404

APAC

Shanghai:
+ 86 21 2412 1618/19
Sydney:
+61 2 9751 8500



Our powerful portfolio of brands:

CADDY ERICO HOFFMAN ILSCO SCHROFF TRACHTE