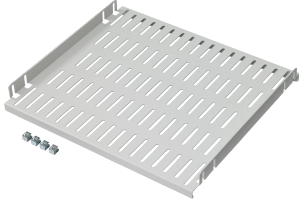


Vented Shelf 19-inch Rack Mount Fixed



Fixed Vented Shelf has large ventilation slots in shelf surface. Mounts between two pairs of 19-in rack mounting angles that have accessory mounting legs.

FEATURES

Plated steel mounting hardware is furnished

SPECIFICATIONS

Color: Light Gray
Material: Mild Steel
Finish: Powder Coated
Color Code: RAL 7035

| Table 1/1 | | | | |
|----------------|----------------|-----------|------------|------------|
| Catalog Number | Article Number | Thickness | Rack Units | Quick Ship |
| A19SH5 | 40020 | 1.9mm | 1U | No |
| A19SH6 | 40030 | 1.9mm | 1U | No |
| A19SH8 | 40040 | 1.9mm | | No |

WARNING

nVent products shall be installed and used only as indicated in nVent's product instruction sheets and training materials. Instruction sheets are available at www.nvent.com and from your nVent customer service representative. Improper installation, misuse, misapplication or other failure to completely follow nVent's instructions and warnings may cause product malfunction, property damage, serious bodily injury and death and/or void your warranty.



Our powerful portfolio of brands:

CADDY ERICO HOFFMAN ILSCO SCHROFF TRACHTE