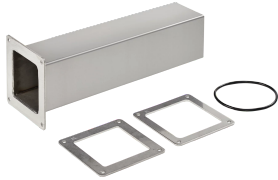


Telescope Fitting Feed-Through Stainless Steel



Feed-Through Stainless Steel Telescope Fittings are for adjusting wireway length without cutting or welding. Length is easily adjustable from 1.50 in. to 13.50 in. (343 mm). Connects to other wireway sections and fittings and protects wires and cables in frequently hosed down, very wet or highly corrosive applications.

FEATURES

Feed-Through Stainless Steel Telescope Fittings are for adjusting wireway length without cutting or welding

Length is easily adjustable from 1.50 in. to 13.50 in. (343 mm)

Connects to other wireway sections and fittings and protects wires and cables in frequently hosed down, very wet or highly corrosive applications

SPECIFICATIONS

Finish: No. 2B
Material: Stainless Steel 304

Table 1/1						
Catalog Number	Article Number	Type	Height	Width	Thickness	Quick Ship
F44WASS	15490	Telescope Fitting	102mm	102mm	1.59mm	No
F66WASS	15630	Telescope Fitting	152mm	152mm	1.59mm	No

ADDITIONAL PRODUCT DETAILS

All dimensions are to outside surfaces. Allow .12 in. (3 mm) additional for gasket at joints.

WARNING

nVent products shall be installed and used only as indicated in nVent's product instruction sheets and training materials. Instruction sheets are available at www.nvent.com and from your nVent customer service representative. Improper installation, misuse, misapplication or other failure to completely follow nVent's instructions and warnings may cause product malfunction, property damage, serious bodily injury and death and/or void your warranty.



Our powerful portfolio of brands:

CADDY ERICO HOFFMAN ILSCO SCHROFF TRACHTE