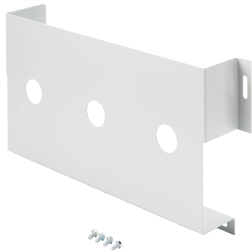


# ProLine G2 Steel Data Pocket



Provides a convenient place to store wiring diagrams, operation manuals and other documentation inside the enclosure.

## FEATURES

---

Steel Data Pocket fastens to the bottom of the door

Door Bar Grid Straps (purchased separately) must be used to change the vertical mounting position of the data pocket

SPECIFICATIONS

Table 1/1						
Catalog Number	Article Number	Height	Width	Depth	Material	Finish
P2ADPS1	33651	224mm	409mm	72mm	Mild Steel	Powder Coated

WARNING

nVent products shall be installed and used only as indicated in nVent's product instruction sheets and training materials. Instruction sheets are available at [www.nvent.com](http://www.nvent.com) and from your nVent customer service representative. Improper installation, misuse, misapplication or other failure to completely follow nVent's instructions and warnings may cause product malfunction, property damage, serious bodily injury and death and/or void your warranty.



Our powerful portfolio of brands:

CADDY   ERICO   HOFFMAN   ILSCO   SCHROFF   TRACHTE